

# Fine Chinese Ceramics & Works of Art

Monday, 7 October 2013 Hong Kong



## PAIDEGAO





**1**  
A BLUE AND WHITE BRUSH WASHER, QIANLONG  
MARK, QING DYNASTY, 9.5 X 6 CM.

清 乾隆款 青花瓜果紋筆舔

HK\$2,000 - \$3,000



**2**  
A GILT DECORATED FAMILLE-ROSE PLAQUE, H: 6.5 CM.

金地萬花齋戒牌

HK\$1,000 - \$2,000



**3**  
A BLUE AND WHITE SEAL PASTE BOX AND COVER,  
FINELY DECORATED WITH LANDSCAPE, 6.5 X 3 CM.

青花開框山水紋方印盒

HK\$2,000 - \$3,000



**4**  
A COPPER RED GLAZED BASIN, H: 11.5 CM.

齊紅水盂

HK\$3,000 - \$4,000



**5**  
A YELLOW GLAZED BRUSH WASHER, L: 12.5 CM.

蛟黃釉筆舔

HK\$2,000 - \$3,000



**6**  
A GREEN GLAZED "CHILONG" WASHER, MING  
DYNASTY, H: 2.3 CM.

明 綠釉龍紋水洗

HK\$5,000 - \$7,000





7  
A FAMILLE-ROSE SEAL PASTE BOX AND COVER BY LIU YUCEN, FINELY DECORATED WITH ORCHID AND INSCRIPTIONS, H: 6.3 CM.  
劉雨岑 粉彩蘭花紋印盒

HK\$8,000 - \$12,000



8  
A FAMILLE-ROSE BRUSHPOT BY HE XUREN, FINELY DECORATED WITH WINTER LANDSCAPE, 7 X 11 CM.  
何許人 粉彩雪景筆筒

HK\$20,000 - \$30,000





9



10

9

A FAMILLE-ROSE WASHING BASIN, FINELY DECORATED WITH FLOWERS AND BIRDS, 26 X 8.9 CM.

淺絳彩花鳥紋淨手盆

HK\$2,000 - \$3,000

10

A FAMILLE-ROSE HEADSTAND, FINELY DECORATED WITH LANDSCAPE, H: 27.5 CM.

淺絳彩山水紋帽筒

HK\$1,000 - \$2,000



11

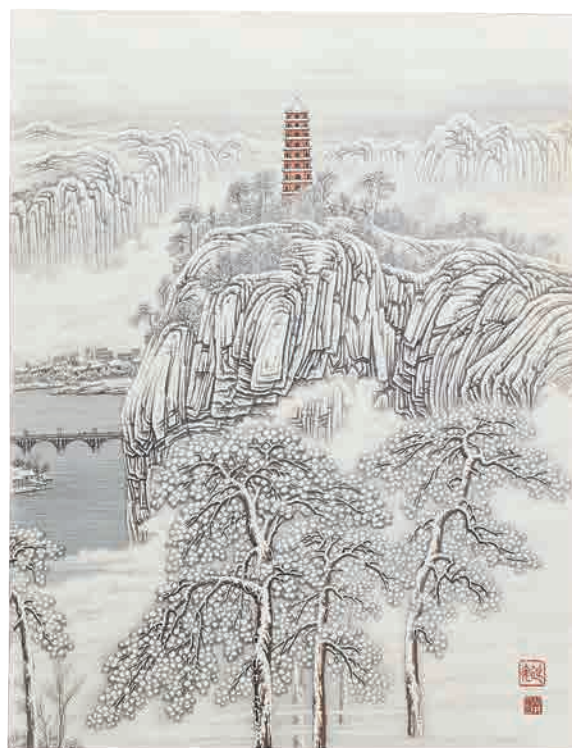
11

A FAMILLE-ROSE TEAPOT BY YU CHUN, FINELY DECORATED WITH FIGURES, 19 X 13 CM.

喻春 淺絳彩人物茶壺

HK\$5,000 - \$7,000





12

A SET OF FOUR FAMILLE-ROSE PLAQUES BY GONG YAOTING, EACH FINELY DECORATED WITH WINTER LANDSCAPE, 64 X 49.5 CM.

龔耀庭 粉彩雪景山水四屏

HK\$30,000 - \$40,000





**13**  
A FAMILLE-ROSE VASE BY WANG PINGSUN, FINELY  
DECORATED WITH LANDSCAPE AND FIGURES,  
H: 19.5 CM.

汪平孫 粉彩山水人物瓶

HK\$16,000 - \$26,000



**14**  
A FAMILLE-ROSE VASE BY WANG YIJUN, FINELY  
DECORATED WITH FLOWERS AND BIRDS, H: 15 CM.

汪以俊 《雅玩珍藏》粉彩花鳥紋雙象耳瓶

HK\$10,000 - \$20,000

汪以俊 (1904-?): 安徽黟縣人，中國陶瓷美術大師，陶瓷美術家。專長粉彩花鳥畫。他十四歲承陶瓷名家吳靄生學藝，有宮廷畫派的特色。由於勤奮好學，二十歲即聲名卓著，是當時瓷壇上一顆初放光芒的明星。





**15**  
A PAIR OF FAMILLE-ROSE BRUSHPOTS BY WEI YONGSHENG, EACH FINELY DECORATED WITH LOAHANS, H: 18.5 CM.  
魏傭生 粉彩人物筆筒一對

HK\$8,000 - \$10,000

魏傭生：生卒不詳。又名魏傭生與汪小亭，王曉帆，石宇初，陸雲山，鄧碧蓀，徐天梅，李明亮並稱“珠山小八友”。1956年在景德鎮陶瓷工藝社供職。他曾師從王琦（“珠山八友”之一），擅畫粉彩人物。後在景德鎮陶瓷工藝美術技藝學校（陶瓷學院前身），擔任粉彩課的教學工作。以繪製粉彩古裝人物畫為主，兼攻填色、洗染。曾以“龍女牧羊”粉彩瓷板畫作課堂示範作品，讓學生臨繪學習。1956年前後調景德鎮陶瓷學院任教，桃李滿天下，為陶瓷藝術事業作出了重要貢獻。



**16**  
A FAMILLE-ROSE BRUSHPOT BY YU HANQING, FINELY DECORATED WITH FLOWERS AND BIRDS, 9.2 X 11.5 CM.  
余翰青 粉彩花鳥筆筒

HK\$5,000 - \$7,000

余翰青（1902-1987）：名達，外號傳芳居士，晚年稱拙翁，畫室名“清平畫室”，江西樂平縣人。十多歲到景德鎮，拜陶瓷花鳥名家陳德明門下學藝，特別注重寫生，採花撲蝶，收集標本，收藏歷代名人畫稿，對詩文、金石、書法更是悉心研究。他的陶瓷作品以工整典雅、精細縝密見稱，能自畫自填色自題詩，融詩、書、畫、印於一體，自成一家。晚年在景德鎮陶瓷學院美術系任教。





**17**  
A BLUE AND WHITE JARDINIÈRE,  
KANGXI PERIOD, FINELY  
DECORATED WITH A CONTINUOUS  
SCENE OF LANDSCAPE AND  
FIGURES, 20 X 15 CM.  
十七世紀 青花人物魚缸

HK\$38,000 - \$45,000



**18**  
A BLUE AND WHITE SAUCER DISH,  
18TH CENTURY, FINELY DECORATED  
WITH SHOU CHARACTERS,  
D: 14.5 CM.  
十八世紀 青花壽紋碟

HK\$20,000 - \$30,000



**19**  
A BLUE AND WHITE CHARGER,  
19TH CENTURY, FINELY DECORATED  
WITH FLOWERS AND BIRDS,  
H: 40.5 CM.  
十九世紀 青花花鳥紋大盤

HK\$18,000 - \$28,000

Paidegao





**20**  
A CARVED CELADON GLAZED  
VASE, YONGZHENG MARK,  
REPUBLIC OF CHINA, H: 17.5 CM.  
民國 雍正款 青釉繩型紋瓶

HK\$4,000 - \$6,000



**21**  
A CARVED AUBERGINE GLAZED  
BOWL, KANGXI MARK,  
21.5 X 9.5 CM.  
康熙款 茄龍紋碗

HK\$4,000 - \$6,000



**22**  
A PAIR OF WHITE GLAZED GARLIC  
MOUTH VASES,  
REPUBLIC OF CHINA, 29 X 15.5 CM.  
民國 甜白釉蒜頭瓶一對

HK\$10,000 - \$20,000





**23**  
A WHITE BISCUIT PEN REST, FINELY CARVED WITH A SCHOLAR, 9.5 X 4.5 CM.  
民國 白瓷人物筆乘

HK\$2,000 - \$3,000



**24**  
A FAMILLE-ROSE SEAL PASTE BOX AND COVER, 19TH CENTURY, 9 X 5.5 CM.  
十九世紀 粉彩人物印盒

HK\$2,000 - \$3,000



**25**  
A GROUP OF THREE SEAL PASTE BOXES AND COVERS, QING DYNASTY, 3.5 X 3.5 X 3 & 7 X 2.5 CM.  
清 粉彩印盒及青花印盒二個

HK\$2,000 - \$3,000



**26**  
A COPPER RED GLAZED BASIN, 19TH CENTURY, 25.5 X 6.5 CM.  
十九世紀 紅釉水仙盤

HK\$3,000 - \$5,000





**27**  
A PAIR OF DOUCAI HANGING  
SCROLL ENDS, REPUBLIC OF  
CHINA, FINELY DECORATED WITH  
LOTUS SCROLL, 4.5 CM.  
民國 斗彩纏枝蓮紋軸頭一對

HK\$1,000 - \$2,000



**28**  
A PAIR OF BLUE AND WHITE  
CUP, 19TH CENTURY, EACH FINELY  
DECORATED WITH PRAWN AND  
CRAB, 9 X 5.5 CM.  
十九世紀 康熙款 青花魚蝦蟹紋杯  
一對

HK\$2,000 - \$3,000



**29**  
A GROUP OF TWO CERAMICS,  
CONSISTS OF A BLUE AND WHITE  
LOTUS SCROLL SAUCER DISH AND  
A BLUE AND WHITE WINE CUP,  
4.5 X 14.5 & 8.5 X 6 CM.  
清 青花纏枝蓮紋盤及  
成化款 青花酒杯

HK\$2,500 - \$3,000





**30**  
A FAMILLE-ROSE VASE BY PENG SHAOYING, FINELY  
DECORATED WITH LANDSCAPE AND FIGURES,  
H: 24.5 CM.  
彭少英 粉彩人物瓶

HK\$30,000 - \$40,000



**31**  
A FAMILLE-ROSE VASE BY ZHAO HUIMIN, FINELY  
DECORATED WITH SOLDIERS, H: 23 CM.  
趙惠民 《1972 年藝術瓷廠美研室》 粉彩草原英雄小姐妹  
人物瓶

HK\$10,000 - \$20,000

趙惠民：別名趙璧，出生於浙江紹興會稽。1975 退休前在景德鎮市藝術瓷廠美研所，專職從事陶瓷美術創作和陶瓷裝飾設計，系中國美術家協會江西分會會員。1959 年被景德鎮市人民政府首批授予 " 陶瓷美術家 " 稱號。曾任景德鎮市政協第三、第七屆委員、第四、第五、第六屆常務委員。





32

A BLUE AND WHITE PLAQUE BY WANG BU, FINELY DECORATED WITH FLOWERS AND BIRD, 13.5 X 24.5 CM.  
王步 青花鳥紋瓷片

HK\$100,000 - \$150,000

王步 (1898-1968)：字仁元，號竹溪，晚年所作青花瓷及中國畫常署“陶青老人”，江西豐城縣人。從一九零七年來到景德鎮至一九六八年病逝，從事陶瓷美術工作長達六十餘年，生平創作釉下、釉上、堆雕、刻花瓷器數以萬計，尤精于青花。





**33**  
A FAMILLE-ROSE VASE BY DENG QIAOYU, FINELY  
DECORATED WITH FLOWERS AND BIRD, H: 19 CM.  
鄧肖禹 粉彩花鳥瓶

**HK\$5,000 - \$7,000**



**34**  
A FAMILLE-ROSE VASE, FINELY DECORATED WITH  
BUFFALO HERDING, H: 30 CM.  
藍料邊粉彩放牧圖瓶

**HK\$30,000 - \$40,000**

鄧肖禹：出生於陶瓷世家，祖父為“珠山八友”之一鄧碧珊，自幼受薰陶，對陶瓷藝術有著濃厚的興趣，生前為景德鎮陶瓷美術家，曾任市書畫院畫師、市人大代表、陶瓷美術界老藝術家聯誼會理事。他尤擅粉彩，效法景德鎮花鳥瓷畫名家程意亭的筆意和技巧，深得嶺南畫派之精妙。畫作取材廣泛，技法獨到，色彩清麗，形神兼備，自成一格。在中國陶瓷美術界具有很高的威望。











一夜北風  
寒萬里  
恍恍玉龍  
漫天飛  
騎驢踏雪  
過小橋  
慨然獨嘆  
梅花瘦

甲戌冬月

許人何處

尚於珠山

客次







**35**

A SET OF FOUR FAMILLE-ROSE PLAQUES BY HE XUREN, FINELY DECORATED WITH WINTER LANDSCAPE AND INSCRIPTIONS, 17 X 55 CM.

《何許人出品》 何許人 通景山水人物瓷片一套四件

**HK\$380,000 - \$500,000**

何許人 (1882-1940)：名處，字德達，安徽南陵人。何氏善微書，能在徑寸印泥盒上書寫《出師表》、《赤壁賦》。以畫雪景山水見長，他創作的《寒江獨釣圖》、《踏雪尋梅圖》都是使人百看不厭的作品。





36

A FAMILLE-ROSE CHARGER BY DENG QIAOYU, FINELY DECORATED WITH SOLIDUS,  
40 X 8.5 CM.

鄧肖禹 粉彩英雄鬥智大盤

HK\$20,000 - \$30,000





37

A FAMILLE-ROSE VASE BY YU WENXIANG, FINELY DECORATED WITH SNOW LANDSCAPE, H: 28 CM.

余文襄 《景德镇土藝美術合作社出品》 粉彩雪景雙耳瓶

HK\$28,000 - \$38,000

余文襄（1910年出）：江西都昌人，擅雪景山水。





38

A FINE PAIR OF BLUE ENAMEL GROUP FAMILLE-ROSE DECORATED MEIPING WITH COVER BY HE XUREN, EACH FINELY DECORATED WITH LANDSCAPE AND FIGURES, H: 41.5 CM.

何許人 《許人精製款》 重工琺瑯彩開光粉彩蓋瓶一對

HK\$80,000 - \$100,000





**39**  
A FAMILLE-ROSE VASE BY GONG YAOTING, FINELY DECORATED WITH SNOW  
LANDSCAPE AND FIGURES, H: 32 CM.

龔耀庭 1960 年 《景德鎮市陶瓷研究所》 粉雪景人物瓶

HK\$30,000 - \$40,000





40

A FAMILLE-ROSE BOWL BY GONG YAOTING, OUTER SURFACE FINELY DECORATED WITH SNOW LANDSCAPE INSIDE DECORATED WITH FIVE BATS AND SHOU CHINESE CHARACTERS, 26 X 9.5 CM.

龔耀庭 《景德鎮市陶瓷研究所》 粉彩雪景人物內珊瑚紅五福奉壽紋大碗

HK\$30,000 - \$40,000

龔耀庭 (1910-1975)：中國陶瓷美術大師，陶瓷美術家。江西南昌人。10 歲即在景德鎮何德達瓷店學藝，對陶瓷美術技藝刻苦鑽研，年青時在山水瓷畫方面頗負盛名。解放後，技藝進步更快，在山水畫方面，不論青綠、淺絳、雪景等都能盡其所長，特別是淺絳山水畫更為出色。對於工筆山水中的一草一木，樹石樓臺，無一不精。1959 年由景德鎮市人民政府授予“陶瓷美術家”稱號。1964 年他到黃山寫生以後，在山水瓷畫上兼工帶寫，以淺絳為基調，其畫不僅表現筆法蒼勁有力，而且刻畫細膩，設色雅致而明快，構圖生動，變化自如，突破了山水瓷畫大紅大綠的俗氣，給人以意境深遠的美感，格調高雅，自成一家，是景德鎮頗有影響的粉彩工筆山水畫家。其主要作品有粉彩工藝山水梅瓶、“假日”山水瓷瓶等。



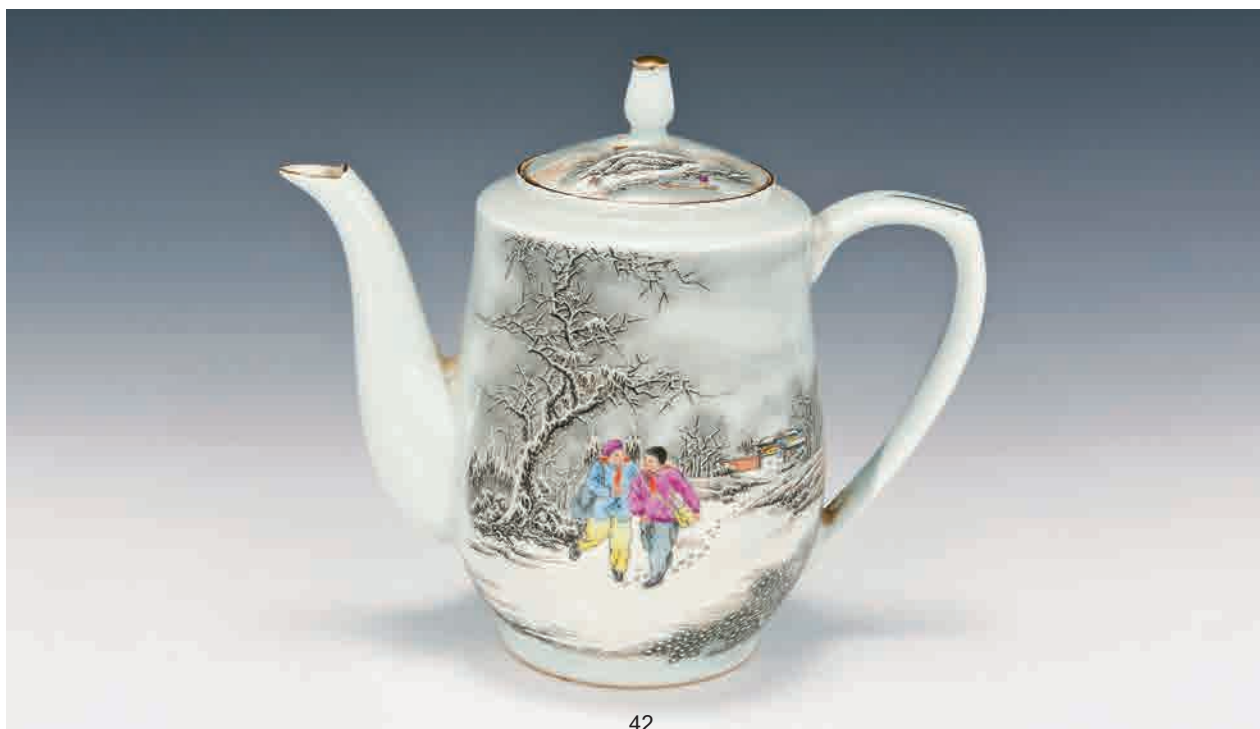


41

A FAMILLE-ROSE JARDINIÈRE, THE FIRST YEAR OF HONGXIAN  
MARK, FINELY DECORATED WITH FLOWERS AND BIRDS, 25 X 25 CM.  
潘甸字 《洪憲元年監製》 琺瑯彩花鳥紋水洗

HK\$250,000 - \$300,000





42



43

**42**  
A FAMILLE-ROSE TEAPOT BY YU WENXIANG, FINELY  
DECORATED WITH SNOW LANDSCAPE, H: 20 CM.  
余文襄 粉彩雪景題詩茶壺

HK\$18,000 - \$28,000

**43**  
A FAMILLE-ROSE TEAPOT BY ZOU WENHOU, FINELY  
DECORATED WITH FLOWERS AND BIRD, H: 16.5 CM.  
鄒文侯 粉彩花鳥茶壺

HK\$5,000 - \$7,000

鄒文侯 (?-1951)：江西南昌縣棠溪人。20 世紀 30 年代在南昌受聘於麗澤軒瓷店畫彩瓷，1939 年到景德鎮繪瓷數年。擅長粉彩花卉、翎毛、走獸、草蟲等。筆法瀟灑活潑、頗具任伯年風格。他在彩瓷畫中，多以白鷺、荷花入畫為題材，也深受人們喜愛。他對於色彩和物態的駕馭與捕捉的能力是較強的，用近乎小寫意的筆法，以墨彩鋪染成荷花、墨法控制極佳、暈染色澤濃淡相宜、造型生動傳神，不免使人想起“蓮葉田田”的詩緒。他對整幅瓷畫用色極為考究，常以墨彩代替綠彩，引入傳統水墨寫意的技法，潤澤與濃豔，使觀賞者都不難感受到其中的韻趣。





**44**  
A WHITE JADE CICADA, MING DYNASTY,  
H: 4.8 CM.  
明 白玉蟬件

HK\$3,000 - \$5,000



**45**  
A YELLOW JADE ARCHAISTIC PENDANT,  
MING DYNASTY, 3.7 X 4.9 CM.  
明 黃玉珮

HK\$6,000 - \$8,000



46 (3 pieces)

**46**  
A SET OF THREE JADE TUBES, 2 X 4.5 CM.  
古玉勒子三件

HK\$6,000 - \$8,000



47

**47**  
A PALE JADE BANGLE, MING DYNASTY, 7.5 CM.  
明 古玉手鐲

HK\$13,000 - \$20,000

**48**  
A GREYISH JADE PENDANT, 13 CM.  
古玉饕餮紋刑器

HK\$8,000 - \$10,000







**49**  
A GILT DECORATED WHITE JADE SNUFF BOTTLE,  
QING DYNASTY, H: 6.5 CM.  
清白玉描金花蝶紋煙壺

HK\$30,000 - \$50,000



**50**  
A FINE AND RARE YELLOW JADE "DRAGON"  
PENDANT, QING DYNASTY, H: 6.5 CM.  
清 和田黃玉雙龍抱珠（栗子黃品種）

HK\$38,000 - \$60,000





**51**  
A FAMILLE-ROSE PANEL BY XIE YINQUAN WITH  
WOODEN FRAME, FINELY DECORATED WITH FISH AND  
SEAWEED, 21.5 X 54 CM.  
謝隱泉 粉彩魚藻圖瓷板掛屏

HK\$10,000 - \$30,000



**52**  
A FAMILLE-ROSE PANEL BY LI RONGJI WITH WOODEN  
FRAME, FINELY DECORATED WITH LANDSCAPE AND  
FIGURE, 25 X 38.5 CM.  
李榕記 粉彩山水瓷板掛屏

HK\$6,000 - \$10,000





**53**  
A FAMILLE-ROSE PANEL BY WANG SHAO WEI WITH WOODEN FRAME, FINELY  
DECORATED WITH LANDSCAPE, 24 X 35 CM.  
王少維 淺降彩山水瓷板掛屏

HK\$30,000 - \$50,000





54

A FAMILLE-ROSE PANEL BY NING YUAN WITH WOODEN FRAME, FINELY DECORATED WITH PEONY, 36 X 22 CM.

寧遠 粉彩牡丹紋瓷板掛屏

HK\$3,000 - \$7,000

寧發有 (b. 1978)：字遠，別署遊山樵子，山西浮梁人。1996 年畢業於江西美術學院，同年師從粉彩瓷畫名家江家旺研習陶瓷繪畫，主攻粉彩花鳥、魚藻，兼習書法、金石。後又得老藝人譚堯卿指點，作品工寫兼備、構圖明快，設色清雅，謀篇佈局，閉合有度，追求意境。作品為海內外眾多藏家親睽及收藏。



55

A FAMILLE-ROSE FAN SHAPED PLAQUE BY PAN ZUXI, FINELY DECORATED WITH LANDSCAPE AND POEMS, 25 X 56 CM.

潘祖熙 墨彩山水題詩扇型瓷片

HK\$20,000 - \$30,000









56

A SET OF FOUR FAMILLE-ROSE PLAQUES BY GONG YAOTING, EACH FINELY DECORATED WITH SNOWY LANDSCAPE, 59.5 X 30.5 CM.

龔耀庭 粉彩雪景山水四屏

HK\$160,000 - \$260,000





57

A SET OF TWO FAMILLE-ROSE PANELS , GU HUAN MARK WITH WOODEN FRAME,EACH FINELY DECORATED WITH LANDSCAPE, 21 X 72 CM.

古歡 粉彩山水瓷板掛屏一套兩件

HK\$70,000 - \$100,000





58

A SET OF FOUR FAMILLE-ROSE PANELS, YA WAN ZHEN CANG MARK WITH WOODEN FRAME, EACH FINELY DECORATED WITH LANDSCAPE, 21.5 X 80 CM.

雅玩珍藏 粉彩山水掛屏一套四件

HK\$30,000 - \$50,000





59

A GROUP OF TWO FAMILLE-ROSE PANELS, FU LIANG XIAN ZHI WITH WOODEN FRAME, FINELY DECORATED WITH WILD GEESE AND WEED, 42.5 X 28 CM.

浮梁陶縣製 粉彩蘆雁圖瓷板掛屏兩件

HK\$6,000 - \$12,000





60



61



62



63

**60**

A WHITE JADE PLAQUE, QING DYNASTY, FINELY CARVED WITH FIGURES AND INSCRIPTIONS, 4.5 X 5.7 CM.

清 白玉歡天喜地人物牌

HK\$30,000 - \$100,000

**62**

A WHITE JADE PLAQUE, QING DYNASTY, FINELY CARVED WITH FIGURES AND INSCRIPTIONS, 4.4 X 6.5 CM.

清 白玉一團和氣牌

HK\$25,000 - \$100,000

**61**

A WHITE JADE PLAQUE, QING DYNASTY, FINELY DECORATED WITH FIGURES AND INSCRIPTIONS, 4 X 6.3 CM.

清 白玉福自天來牌

HK\$28,000 - \$150,000

**63**

A WHITE JADE BELT BUCKLE, 17TH CENTURY, 4 X 3 CM.

清初 白玉龍勾

HK\$13,000 - \$20,000





64



65



66



67



68



69

**64**

A WHITE JADE PENDANT, QING DYNASTY, FINELY CARVED WITH BATS AND COINS, H: 7 CM.

清 白玉福在眼前珮

**HK\$18,000 - \$22,000**

**67**

A CARVED WHITE JADE FIGURE, QING DYNASTY, FINELY CARVED WITH A BOY AND PRECIOUS OBJECTS, H: 5.8 CM.

清 白玉運財童子

**HK\$6,000 - \$9,000**

**65**

A WHITE JADE PENDANT, FINELY CARVED WITH BATS AND COINS, D: 5.3 CM.

清 白玉福在眼前件

**HK\$20,000 - \$30,000**

**68**

A WHITE JADE RAM AND RUYI PENDANT, QING DYNASTY, H: 5.5 CM.

清 青白玉羊如意

**HK\$6,000 - \$8,000**

**66**

A CARVED SPINACH GREEN JADE "DRAGON" CIRCULAR PLAQUE, QING DYNASTY, H: 5.5 CM.

清 碧玉龍紋牌

**HK\$10,000 - \$20,000**

**69**

A WHITE JADE RUYI SCEPTER, QING DYNASTY, H: 7.3 CM.

清 白玉透雕如意

**HK\$6,000 - \$8,000**





70

**70**

A WHITE JADE PLAQUE FINELY CARVED WITH MYTHICAL BEAST, H: 6 CM.

白玉瑞獸紋牌

HK\$2,000 - \$3,000



71

**71**

A WHITE JADE PENDANT CARVED WITH TAOTIE MASK, QING DYNASTY, 5 X 9 CM.

清 白玉饕餮紋件

HK\$2,000 - \$3,000



72

**72**

A WHITE JADE PENDANT CARVED WITH LOTUS, QING DYNASTY, H: 5 CM.

清 白玉荷花件

HK\$3,000 - \$5,000



74

**73**

A WHITE JADE PENDANT, QING DYNASTY, FINELY CARVED WITH MELONS, H: 6 CM.

清 白玉瓜果紋件

HK\$3,000 - \$5,000



75

**74**

A WHITE JADE CARVING OF TURTLE AND DRAGON, QING DYNASTY, H: 5 CM.

清 白玉龜化龍件

HK\$4,000 - \$6,000

**75**

A CARVED SPINACH GREEN JADE PLAQUE, QING DYNASTY, FINELY CARVED WITH BATS AND COINS, 8.3 X 5.3 CM.

清 碧玉福在眼前掛件

HK\$2,000 - \$3,000





**76**  
A CARVED GREYISH JADE VASE AND COVER,  
H: 18 CM.  
灰白玉龍紋瓶

HK\$10,000 - \$20,000



**77**  
A CARVED WHITE JADE VASE AND COVER,  
10.4 X 13 CM.  
白玉花瓶

HK\$8,000 - \$11,000



**78**  
A CARVED WHITE JADE HAIR ORNAMENT, QING DYNASTY, L: 27.3 CM.  
清 白玉龍鳳紋頭飾

HK\$10,000 - \$20,000





79



80

**79**  
A FAMILLE-ROSE FAN SHAPED PLAQUE  
BY ZHU SHOUZHI, FINELY DECORATED  
WITH LANDSCAPE AND INSCRIPTIONS,  
25 X 56 CM.

朱受之 墨彩山水題詩扇型瓷片

**HK\$20,000 - \$30,000**

朱受之：擅墨彩山水、人物肖像畫。

**80**  
A FAMILLE-ROSE PANEL, JIANG  
YONGYUAN MARK WITH WOODEN  
FRAME, FINELY DECORATED WITH  
FLOWERS AND BIRDS, 23 X 33 CM.  
江永源款 淺降彩花鳥瓷板掛屏

**HK\$6,000 - \$10,000**

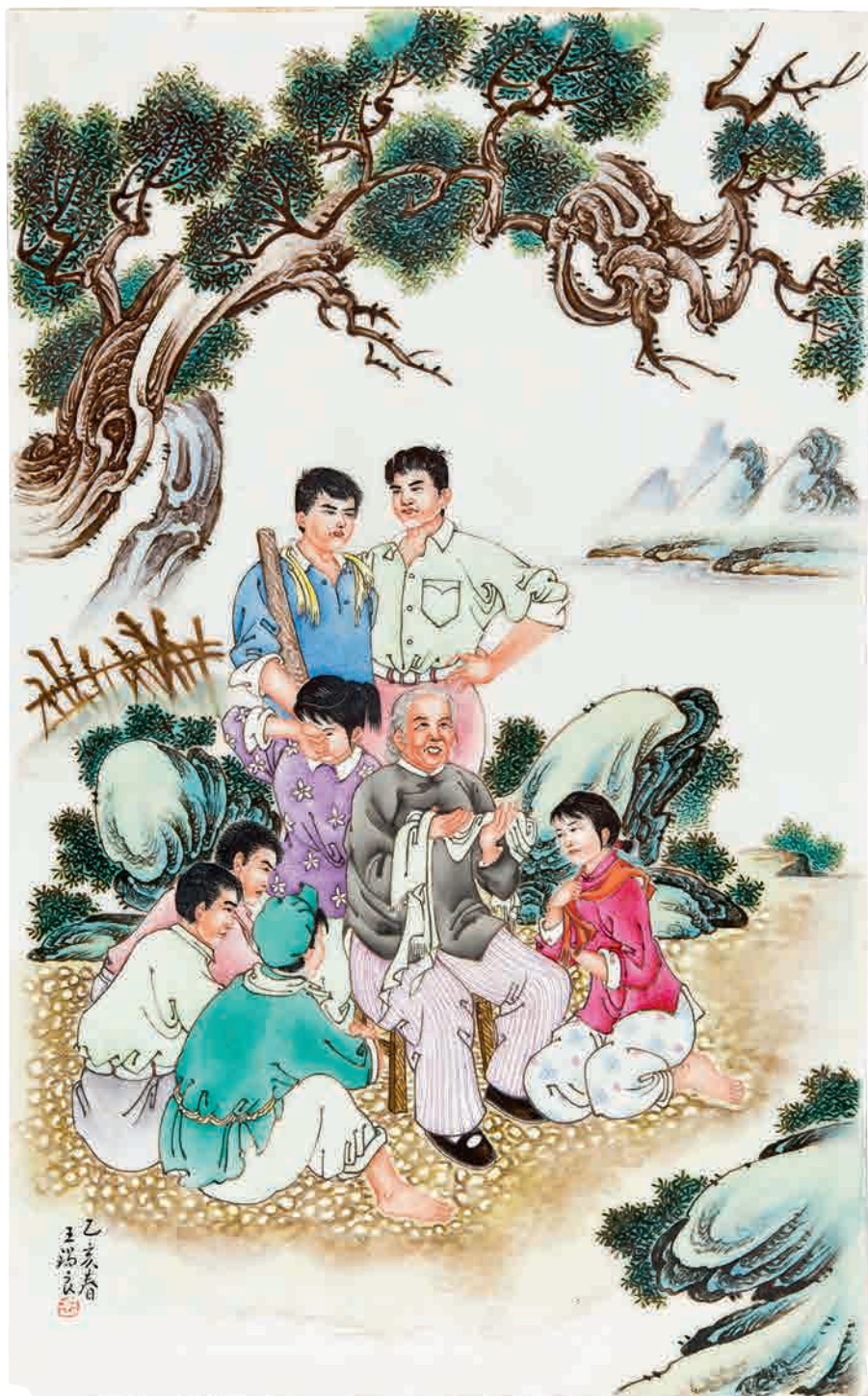




81  
A FAMILLE-ROSE PANEL WITH WOODEN FRAME BY HUANG HUN, FINELY  
DECORATED WITH SNOWY LANDSCAPE, 24.5 X 37.5 CM.  
黃昏 粉彩雪景山水瓷版掛屏

HK\$80,000 - \$200,000





82

A FAMILLE-ROSE PLAQUE BY WANG XILIANG, FINELY DECORATED WITH OLD LADY AND TEENAGERS, 26 X 42 CM.

王錫良 粉彩民革故事瓷片

HK\$20,000 - \$30,000

王錫良：原籍安徽省黟縣，1922年出生于景德镇。幼年家境貧寒，12歲輟學隨叔父王大凡（“珠山八友”之一，景德镇陶瓷美術名家）學繪瓷畫。1952年進入景德镇美術合作社，2年後轉入景德镇工藝社，隨後進入輕工業部陶瓷工業科學研究所，從事陶瓷美術創作、研究。





83

A FAMILLE-ROSE PLAQUE BY WANG XILIANG, FINELY DECORATED WITH FIGURES, 22 X 30 CM.

王錫良 粉彩苗山新秀人物瓷片

HK\$20,000 - \$30,000





84



85

**84**

A LARGE PAIR OF TURQUOISE GROUND JAR, DA YA ZHAI MARK, REPUBLIC OF CHINA, EACH FINELY DECORATED WITH PEONY AND BIRDS, 40 X 30 CM.  
民國 大雅齋 松綠地粉彩花鳥紋大缸一對

**HK\$18,000 - \$22,000****85**

A MASSIVE CELADON GROUND UNDERGLAZED COPPER RED AND BLUE BOTTLE VASE, QIANLONG MARK, FINELY DECORATED WITH PINE TREE, BAMBOO AND PLUM, 60 CM.  
十九世紀 乾隆款 豆青地青花釉裡紅松竹梅天球瓶

**HK\$30,000 - \$40,000**





86

A FINE PAIR OF FAMILLE-ROSE VASES, HONGXIAN YUZHI MARK, EACH FINELY DECORATED WITH FLOWERS AND BIRDS, H: 23.5 CM.

民國 洪憲御製 粉彩描金花鳥紋瓶一對

HK\$80,000 - \$100,000





87  
A FAMILLE-ROSE PANEL WITH WOODEN FRAME AND STARGOD OF  
LONGEVITY, LATE QING DYNASTY, 25 X 38 CM.  
晚清 淺降彩蟠桃獻壽圖插屏

HK\$60,000 - \$80,000

Paidegao

C43





**88**  
A FAMILLE-ROSE PLAQUE BY WANG  
YIJUN, FINELY DECORATED WITH CRANES,  
32.5 X 56.5 CM.  
汪以俊 六鶴同春瓷片

HK\$10,000 - \$20,000



**89**  
A FAMILLE-ROSE PANEL WITH FRAME, LATE  
QING, FINELY DECORATED WITH LANDSCAPE  
AND FIGURES, 25.5 X 38.5 CM.  
晚清 粉彩青綠山水人物掛屏

HK\$30,000 - \$40,000





90

A FAMILLE-ROSE PANEL BY WANG XIAOTANG WITH WOODEN FRAME, FINELY DECORATED WITH FIGURES, 24 X 37 CM.

汪曉棠 粉彩人物瓷板掛屏

HK\$10,000 - \$30,000

汪曉棠 (1885-1924)：又名汪隸、汪隸華，字曉棠，號“龍山樵子”。中國陶瓷美術大師。





91  
A FINE PAIR OF FAMILLE-ROSE BOWLS, YONGZHENG  
MARK AND PERIOD, EACH FINELY DECORATED WITH  
FLOWERS, 15 X 7 CM.  
雍正 粉彩過牆花卉紋碗一對

HK\$20,000 - \$30,000

參考：清代粉彩瓷識真，第 53 頁，江西美術出版社。





92

A FAMILLE-ROSE PANEL WITH FRAME BY WANG QI, FINELY DECORATED WITH FIGURES, 25 X 38 CM.

王琦 粉彩人物瓷板掛屏

HK\$80,000 - \$200,000

王琦 (1884-1934)：字碧珍或壁珍，外號陶迷道人，畫室名“匊匊齋”，江西新建人。十多歲時到景德鎮，初以捏面人為生，後畫瓷板肖像，很受鎮民歡迎。他借鑒錢慧安仕女畫作品為藍本，畫工筆粉彩人物。後來受“揚州八怪”之一黃慎影響，改變畫風，用寫意方式畫人物，用筆揮灑豪放。創新用粉彩顏料畫人物臉部，使作品有清新柔和之美感，與西洋畫接近，時人稱為“西法頭子”他在瓷器上加上較長的草書題記，別具一格。1928年發起組織“月圓會”，名揚天下。王琦是“珠山八友”中成就最高的一位藝人。





93

**93**  
A WHITE JADE FIGURE OF AN OX,  
19TH CENTURY, 13 CM.  
十九世紀 白玉牛件

**HK\$4,000 - \$6,000**



94

**94**  
A WHITE JADE PENDANT CARVED  
WITH DRAGON, QING DYNASTY,  
2 TO 7 CM.  
清 白玉龍紋件連銀鍊

**HK\$5,000 - \$7,000**



95

**95**  
A SINGLE STAND OF JADE BEAD  
NACKLACE, L: 84 CM.  
諗珠一串

**HK\$2,000 - \$3,000**





**96**  
A WHITE JADE CARVING GROUP,  
QING DYNASTY, FINELY CARVED  
WITH FIVE CHILDREN,  
11.5 X 5 CM.  
清 白玉五子登科件

HK\$10,000 - \$15,000



97

97

**97**  
A WHITE JADE THUMB RING AND A RUYI SCEPTRE, 4.5 X 2.5 &  
L: 14 CM.  
青白玉斑指及青白玉如意

HK\$14,000 - \$24,000



98

**98**  
A SPINACH GREEN JADE PENDANT CARVED WITH SQUIRREL  
AND MELON, 5.5 X 3.9 CM.  
碧玉松鼠瓜果紋珮

HK\$4,000 - \$6,000

**99**  
A CARVED WHITE COPPER BOX AND COVER, FINELY  
CARVED WITH CALLIGRAPHY, 12.5 X 12.5 CM.  
《榮寶上心》 白銅刻蘭亭書法墨盒

HK\$3,000 - \$4,000







100



103



101



102



104



105



106

**103**

A WHITE JADE FRUIT PENDANT, H: 6 CM.  
白玉瓜果件

**HK\$3,000 - \$4,000**

**100**

A WHITE JADE CARVING OF LIU HAI AND TOAD  
PENDANT, H: 5 CM.  
白玉劉海戲蟾件

**HK\$4,000 - \$6,000**

**104**

A WHITE JADE DRAGON PENDANT, H: 6.8 CM.  
白玉龍件

**HK\$3,000 - \$5,000**

**101**

A WHITE JADE FIGURE CITRON PENDANT, H: 8.5 CM.  
白玉佛手

**HK\$3,000 - \$4,000**

**105**

A PALE CELADON AND BROWN JADE FIGURE OF TWO  
DOGS, H: 4.5 CM.  
巧色青白玉雙犬

**HK\$4,000 - \$6,000**

**102**

A YELLOW JADE THUMB RING CARVED IN OPEN  
WORK OF STYLISHED ARCHAISTIC DRAGONS,  
3.2 X 2.6 CM.  
黃玉活環班指

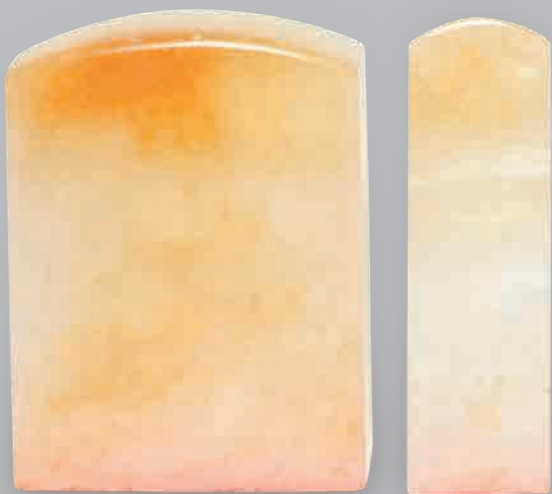
**HK\$3,000 - \$4,000**

**106**

A WHITE JADE BELT BUCKLE, L: 11.5 CM.  
白玉透雕龍勾

**HK\$6,000 - \$8,000**





**107**  
A GROUP OF TWO WHITE JADE SEALS, 3.7 X 3 X 5 & 1.5 X 1 X 5 CM.  
白玉印一對

HK\$3,000 - \$4,000



**108**  
A JADEITE PLAQUE, FINELY CARVED WITH BAMBOO AND FLORAL, 10 X 8.4 CM.  
翡翠刻竹花卉片

HK\$2,000 - \$3,000



**109**  
A GROUP OF FOUR GREYISH WHITE JADE BANGLES, D: 7.3 TO 7.7 CM.  
白玉手鐲四件

HK\$4,000 - \$6,000





110



111

**110**  
A YIXING TEAPOT BY HUI YIGONG, 19 X 8 CM.  
惠逸公 长方型螭宜興茶壺

HK\$8,000 - \$20,000

逸公 (1766-1831)：清朝著名紫砂藝人。惠逸公生於清雍乾年間，他大小壺兼制，以工巧聞名，可與惠孟臣相提並論。與明朝的惠孟臣並稱“二惠”。只是惠孟臣的作品以渾樸精巧出名，比較而言，惠逸公則工巧有餘，渾樸不足。但逸公制壺形式大小與諸色泥質俱備，且長於工巧，而渾樸不逮。逸公書法楷行草書俱備，楷書尤有唐人遺意，而竹刀鋼刀俱備，刻鏤或飛舞或沉著。其壺泥色最奇，小壺亦有佳者，莫若手造大壺之古樸可愛也。

**111**  
A YIXING TEAPOT BY ZHOU JISHAN, 19 X 11.5 CM.  
周季山 六角型宜興茶壺

HK\$8,000 - \$20,000

周季山 (1621-1643)：明天啟、崇禎間人。工冶壺，為明代名手。





112



113

**112**

A YIXING TEAPOT BY YANG PENGNIAN, 17 X 8 CM.

楊彭年 書法宜興茶壺

**HK\$8,000 - \$20,000**

楊彭年 (1796-1850)：字二泉，號大鵬，清嘉慶、道光年間制宜興紫砂壺名藝人，浙江省桐鄉人。善制茗壺，有的渾樸雅致，有的精巧玲瓏，且善配泥色。首創捏嘴不用模子和掇暗嘴之工藝，雖隨意製成，亦有天然之致，世稱“彭年壺”，對後世影響頗大。

**113**

A YIXING TEAPOT BY YANG FENGNIAN, 22.5 X 10 CM.

楊鳳年 瓜果紋宜興茶壺

**HK\$8,000 - \$20,000**

楊鳳年：清嘉慶年間制壺名藝人，荊溪人，一說浙江桐鄉人，楊彭年之妹。構思巧妙，浮雕精美，可與其兄媲美，是歷來公認最有名望的制砂壺女藝人，傳世作品較多。





114



115

**114**  
A YIXING TEAPOT BY SHAO YOU LAN, 18 X 8.5 CM.  
邵友蘭 花卉紋宜興茶壺

HK\$8,000 - \$20,000

**115**  
A YIXING TEAPOT BY YANG FENGNIAN, 16 X 12 CM.  
楊鳳年 竹節紋宜興茶壺

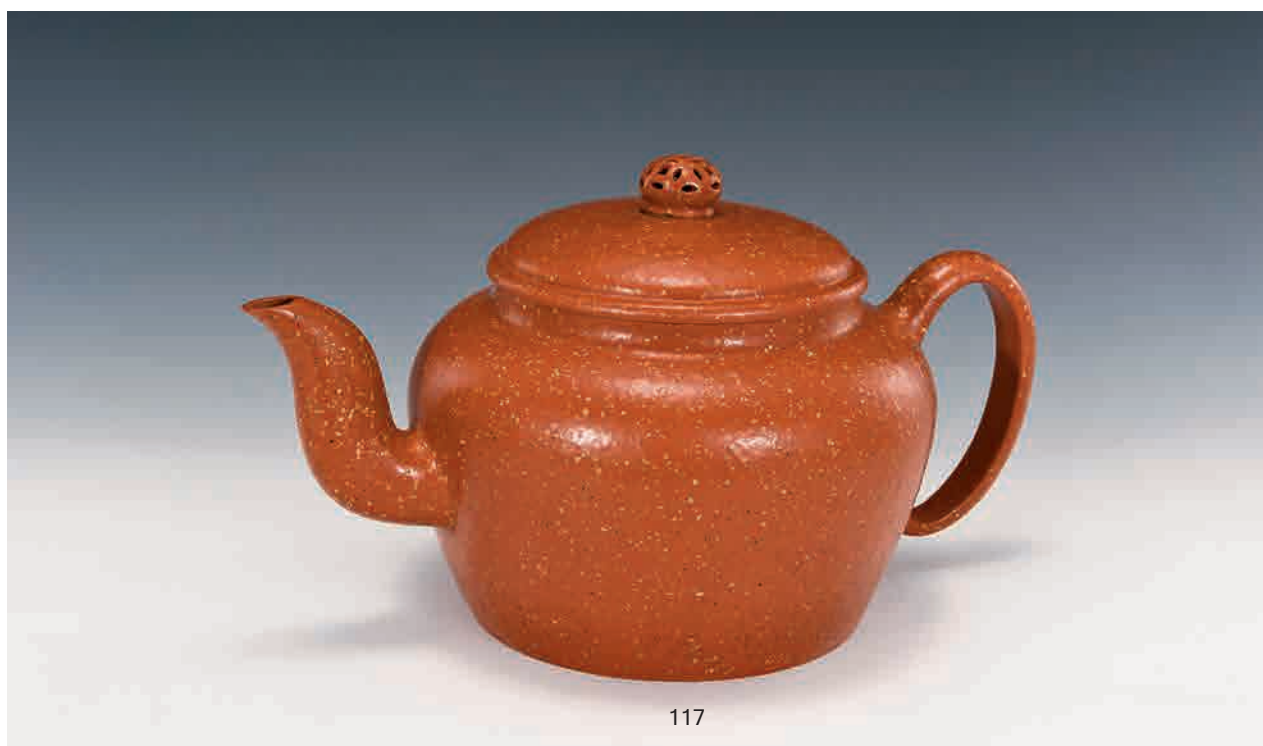
HK\$8,000 - \$20,000

邵友蘭：生於清乾隆末年，歿於同治初年（1795），為清中期紫砂名家。道光年間曾為清宮製作過貢品，北京故宮博物院現收藏他的傳器。邵氏與“符生鄧奎”、“邵二泉”等名家同時，常有印記留在制器上。





116



117

**116**  
A YIXING TEAPOT BY ZHU KEXIN, 17.5 X 11 CM.  
朱可心 花卉紋宜興茶壺

**HK\$8,000 - \$20,000**

朱可心 (1904-1986)：出生與宜興蜀山鎮。原名朱凱長，藝名“可心”，寓意“虛心者，可師也”，“山中一杯水，可清天地心”之意。

**117**  
A MASSIVE YIXING TEAPOT, H: 18.5 CM.  
宜興茶壺

**HK\$8,000 - \$20,000**





118



119

**118**  
A YIXING TEAPOT BY ZHU BAOZHEN, 22.5 X 11 CM.  
朱寶珍 宜興茶壺

HK\$8,000 - \$20,000

**119**  
A YIXING TEAPOT BY WU YUNGEN, H: 20 CM.  
吳雲根 宜興茶壺

HK\$8,000 - \$20,000

吳雲根 (1892-1969)：又名吳芝萊。生於宜興和橋，14 歲拜汪升義（汪生義）為師。1915 年到山西省平定縣平民陶器廠任技師、1929 年受聘于南京中央大學陶瓷科當技術員、1931 年受聘於江蘇省立陶瓷職業學校窯業科任技師、1954 年進入蜀山陶業生產合作社、1955 年 11 月開始為紫砂廠招收第一批學員傳授紫砂製作技藝、1956 年被江蘇省人民政府任命為紫砂“技術輔導員”，成為著名的“紫砂七大名藝人”之一。





**120**  
A SANCAI SQUARE VASE, KANGXI MARK, REPUBLIC OF CHINA, H: 41.5 CM.  
民國 康熙年款 縷空人物方瓶

HK\$4,000 - \$6,000



**121**  
A COPPER RED GLAZED BOTTLE VASE, 19TH CENTURY, H: 37.5 CM.  
十九世紀 紅釉天球瓶

HK\$10,000 - \$20,000



**122**  
A YELLOW GROUND FAMILLE-ROSE ROULEAU VASE, YONGZHENG MARK, H: 43.5 CM.  
雍正款 黃地粉彩寶字瓶

HK\$3,000 - \$4,000



**123**  
A FAMILLE-ROSE VASE, SHEN DE TANG MARK, FINELY DECORATED WITH FIGURES, H: 26 CM.  
慎德堂製 粉彩人物瓶

HK\$3,000 - \$4,000

Paidegao





**124**  
A BLUE GROUND FAMILLE-ROSE DISH, FINELY  
DECORATED WITH FLOWERS, D: 27 CM.  
五彩洒藍開框花卉紋盤

HK\$6,000 - \$8,000



**125**  
A FAMILLE-ROSE BRUSHPOT, FINELY DECORATED WITH  
FIGURES, 18 X 16.5 CM.  
粉彩人物筆筒

HK\$3,000 - \$4,000



**126**  
A PAIR OF 18TH CENTURY BLUE AND WHITE CERAMIC PLAQUES, EACH  
SET WITH A WOODEN FRAME, 11.5 X 5 CM.  
十八世紀 青花瓷片掛屏一對

HK\$1,000 - \$2,000





127

A FINE PAIR OF TURQUOISE GROUND FAMILLE-ROSE SAUCER DISHES, FINELY DECORATED WITH FLOWERS AND BUTTERFLIES, D: 14 CM.

《景德鎮名瓷款》 松綠地粉彩瓜蝶綿綿紋盤一對

HK\$100 - \$500



128

A CELADON GROUND FAMILLE-ROSE DECORATED DISH, JIAJING MARK AND PERIOD, FINELY DECORATED WITH PEACHES, H: 14.5 CM.

嘉慶 豆青地粉彩壽桃紋盤

HK\$100 - \$500



129

129

A FAMILLE-ROSE DISH, TONGZHI MARK AND PERIOD, FINELY DECORATED WITH FLOWERS AND BUTTERFLIES, D: 12 CM.

同治 粉彩花蝶紋盤

HK\$100 - \$500



130

130

A FAMILLE-ROSE SAUCER DISH, CHENGHUA MARK, 19TH CENTURY, FINELY DECORATED WITH PEACHES, D: 13.5 CM.

十九世紀 成化年製 粉彩桃紋盤

HK\$100 - \$500



131

131

A PINK ENAMEL DECORATED TEAPOT AND COVER WITH TRAY, FINELY DECORATED WITH LANDSCAPE AND FIGURES, H: 10 CM

《周大興磁廠出品》 胭脂紅山水人物蓋盅連托

HK\$100 - \$500





**132**  
A LIGHT BLUE GLAZED VASE, YONGZHENG  
MARK, INSIDE WITH DRAGON AND CLOUD, H: 16.5 CM.  
雍正 天藍釉刻雲龍紋瓶

HK\$100 - \$500



**133**  
A FAMILLE-ROSE FIGURE OF A BUDDHA, FU JIAN HUI  
GUAN MARK, H: 31 CM.  
《福建會館》粉彩佛像

HK\$100 - \$500



**134**  
A MASSIVE BLACK GLAZED BOWL, ZHONG GUO JIA  
BO SHI MARK, 37 X 14.5 CM.  
中王國賈泊氏 “黑釉大碗”

HK\$2,000 - \$4,000



**135**  
A CIZHOU PILLOW, TANG DYNASTY, FINELY DECORATED  
WITH A BOY RIDING ON A KILIN, 27 X 13 X 10 CM.  
唐 磁州窯麒麟送子紋瓷枕

HK\$3,000 - \$4,000





**136**  
A FAMILLE-ROSE BOWL BY XU DASHENG, FINELY  
DECORATED WITH MAIDENS, 16 X 6.5 CM.

許達生款 淺降彩仕女人物碗

HK\$2,000 - \$3,000



**137**  
A FAMILLE-ROSE BOWL, GUANGXU MARK, FINELY  
DECORATED WITH CHICKENS IN GARDEN SCENE,  
16.5 X 6 CM.

光緒年製 淺降彩雞紋碗

HK\$2,000 - \$3,000



**138**  
A FAMILLE-ROSE VASE BY WANG XIAOTING, FINELY  
DECORATED WITH LANDSCAPE, H: 28 CM.

汪小亭款 山水玉米瓶

HK\$12,000 - \$15,000



**139**  
A FAMILLE-ROSE VASE BY WANG QI, FINELY  
DECORATED WITH FIGURES AND INSCRIPTIONS,  
H: 27.5 CM.

王琦款 粉彩人物瓶

HK\$150,000 - \$200,000





**140**  
AN UNDERGLAZED FAMILLE-ROSE VASE, DIAO YU TAI MARK, FINELY DECORATED WITH FLOWERS AND BIRDS WITH INSCRIPTIONS, H: 15 CM.  
釣魚台款 釉下彩花鳥題詩瓶

HK\$2,000 - \$3,000



**141**  
AN UNDERGLAZED FAMILLE-ROSE DISH, FINELY DECORATED WITH MANDARIN DUCKS, 23.5 X 5 CM.  
釉下粉彩鴛鴦臥蓮紋盤

HK\$2,000 - \$3,000



**142**  
A PAIR OF UNDERGLAZED FAMILLE-ROSE TEABOWLS AND COVERS, LI LING QUN LI MARK, EACH FINELY DECORATED WITH FLOWERS, H: 13 CM.  
醴陵群力 釉下彩花卉紋茶碗一對

HK\$2,000 - \$3,000



**143**  
AN UNDERGLAZED FAMILLE-ROSE WASHER HU NAN LI LING MARK, FINELY DECORATED WITH FLOWERS AND BIRDS, H: 7.5 CM.  
湖南醴陵 粉彩花鳥紋筆洗

HK\$3,000 - \$4,000





**144**  
A FAMILLE-ROSE CUP, FINELY DECORATED WITH FIGURES, H: 4.5 CM.  
粉彩人物小杯

HK\$2,000 - \$3,000



**145**  
A FAMILLE-ROSE WINE WARMER WITH COVER.  
官窯內造 淺絳彩花鳥溫酒杯一套  
杯高：5 厘米，盅高：10.5 厘米。

HK\$3,000 - \$4,000



**146**  
A FAMILLE-ROSE BRUSHPOT BY WANG XIAOTING, FINELY DECORATED WITH LANDSCAPE, H: 11.7 CM.  
汪小亭款 山水紋筆筒

HK\$2,000 - \$3,000



**147**  
A FAMILLE-ROSE BOWL, REPUBLIC OF CHINA, FINELY DECORATED WITH FLOWERS AND BIRDS, 16 X 6.5 CM.  
民國 淺絳彩花鳥紋碗

HK\$2,000 - \$3,000





**148**

A COBALT BLUE GLAZED BOWL, DAOGUANG MARK AND PERIOD, 18 X 7.5 CM.  
道光 齊藍釉碗

HK\$30,000 - \$40,000



**149**

A FAMILLE-ROSE BOWL, YONGZHENG PERIOD, FINELY DECORATED WITH  
LANDSCAPE, 15 X 7.5 CM.  
雍正 粉彩山水紋碗

HK\$20,000 - \$30,000





150

A FAMILLE-ROSE BASIN, YONGZHENG PERIOD, FINELY DECORATED WITH A BAND OF PEONY SCROLL, H: 7.5 CM.

雍正 粉彩花卉紋小缸

HK\$2,000 - \$3,000



151

A BLUE AND WHITE WASHER, FINELY DECORATED WITH LANDSCAPE AND FIGURES, H: 6 CM.

青花山水人物洗

HK\$3,000 - \$4,000



152

A GETYPE GLAZED WASH, GUAN MARK, 11.5 X 7 CM.

宮款 哥釉龍紋洗

HK\$2,000 - \$3,000



153

A GILT DECORATED "DRAGON" COBALT BLUE WASHER, H: 6.5 CM.

霽藍釉描金龍紋洗

HK\$4,000 - \$6,000





**154**  
A LARGE FAMILLE-ROSE HU SHAPED VASE, QIANLONG MARK, FINELY DECORATED WITH PHOENIX AND INSCRIPTIONS, H: 35.5 CM.  
乾隆款 粉彩鳳紋雙貫耳題詩瓶

HK\$5,000 - \$7,000



**155**  
A FAMILLE-ROSE VASE, HONGXIAN MARK, FINELY DECORATED WITH IMMORTALS, H: 39.5 CM.  
洪憲年製 粉彩仕女人物瓶

HK\$30,000 - \$40,000



**156**  
AN AUBERGINE GLAZED VASE, QING DYNASTY, 18.5 X 32.8 CM.  
清 茄皮紫釉雙耳瓶

HK\$10,000 - \$15,000



**157**  
A DEHUA WHITE GLAZED VASE, H: 25.5 CM.  
德化 白釉瓶

HK\$3,000 - \$4,000





**158**  
A WHITE GLAZED SEATED GUANYIN, H: 12 CM.  
白瓷觀音座像

HK\$2,000 - \$3,000



**159**  
A ROBIN'S EGG GLAZED VASE, H: 13 CM.  
爐均釉小瓶

HK\$2,000 - \$3,000



**160**  
A BLUE AND WHITE VASE, FINELY DECORATED WITH  
PEONY SCROLL, H: 24.5 CM.  
青花纏枝蓮紋鋪首瓶

HK\$5,000 - \$7,000



**161**  
A COPPER RED DECORATED VASE, QIANLONG MARK  
AND PERIOD, H: 23.5 CM.  
乾隆 祭紅釉膽瓶

HK\$18,000 - \$28,000





**162**  
A SET OF FOUR FAMILLE-ROSE PLAQUES BY WANG  
DAPING, EACH FINELY DECORATED WITH TWO  
IMMORTALS, 22 X 30 CM.  
王大平 款彩八仙瓷版一套四幅

HK\$30,000 - \$40,000





**163**

A FAMILLE-ROSE VASE, QIANLONG MARK, FINELY DECORATED WITH THREE STARGODS, H: 25.5 CM.  
乾隆款 粉彩人物三星紋瓶

HK\$2,000 - \$3,000



**164**

A YELLOW GROUND GREEN AND AUBERGINE GLAZED VASE, KANGXI MARK, H: 22.5 CM.  
康熙款 黃地茄綠龍紋碗

HK\$12,000 - \$20,000



**165**

AN EGG SHELL FAMILLE-ROSE VASE, FINELY DECORATED WITH GUANYIN, H: 18.5 CM.  
薄胎粉彩觀音小瓶

HK\$11,000 - \$15,000



**166**

A FAMILLE-ROSE EGG SHELL GLAZED VASE, CIRCA 70', H: 16.5 CM.  
七十年代 薄胎花鳥紋小瓶

HK\$2,000 - \$3,000





**167**

A PAIR OF UNDERGLAZED FAMILLE-ROSE TEABOWLS AND COVERS, JING DE ZHEN MARK, EACH FINELY DECORATED WITH FLOWERS, H: 13 CM.

景德鎮製 釉下彩花卉紋茶碗一對

HK\$2,000 - \$3,000



**168**

A JIZHOU WARE TEABOWL WITH PHOENIX PATTERNED GLAZE, 11.5 X 4.5 CM.

吉州窯雙鳳紋碗

HK\$20,000 - \$30,000



**169**

A PAIR OF FAMILLE-ROSE VASES, FINELY DECORATED WITH FLOWERS AND BIRDS, H: 22.5 CM.

粉彩花鳥紋雙耳瓶一對

HK\$1,000 - \$2,000



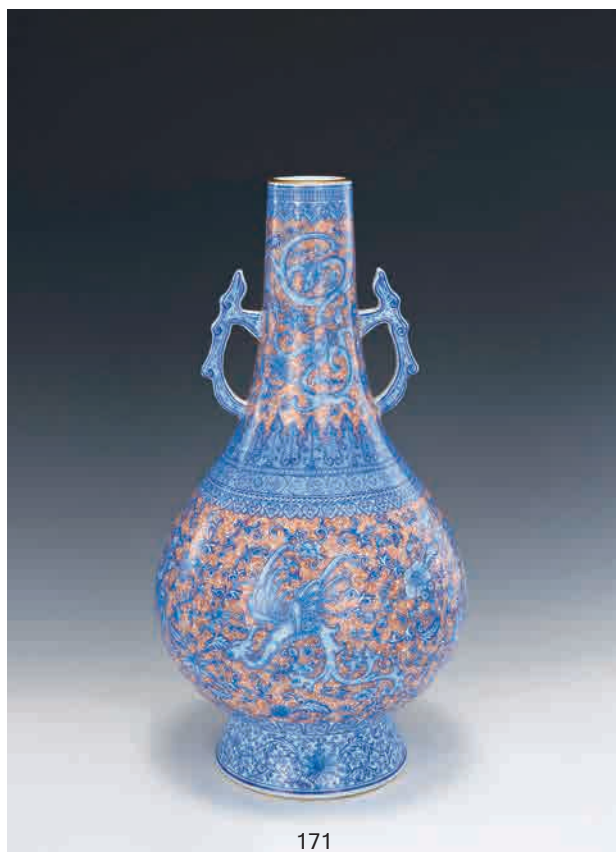
**170**

A PEACH BOOM GLAZED BRUSHPOT, H: 11.5 CM.

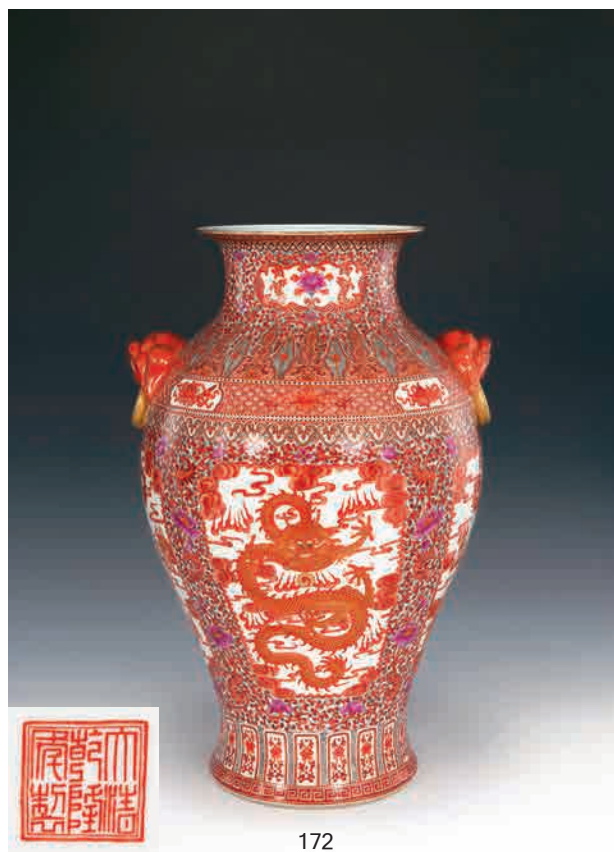
缸豆紅筆筒

HK\$2,000 - \$3,000





171



172



173

**171**

AN ENAMEL DECORATED ARROW VASE, QIANLONG MARK, FINELY DECORATED WITH DRAGON AND PHOENIX, H: 30.5 CM.

七十年代 乾隆年製款 重工琺瑯彩龍鳳紋雙耳瓶 (瓷廠老藝人作品)

HK\$30,000 - \$40,000

**172**

A CORAL RED AND GILT DECORATED VASE, QIANLONG MARK, FINELY DECORATED WITH DRAGON, H: 43.5 CM.

七十年代 乾隆年製款 重工珊瑚紅描金粉彩開光龍紋雙耳瓶 (瓷廠老藝人作品)

HK\$30,000 - \$40,000

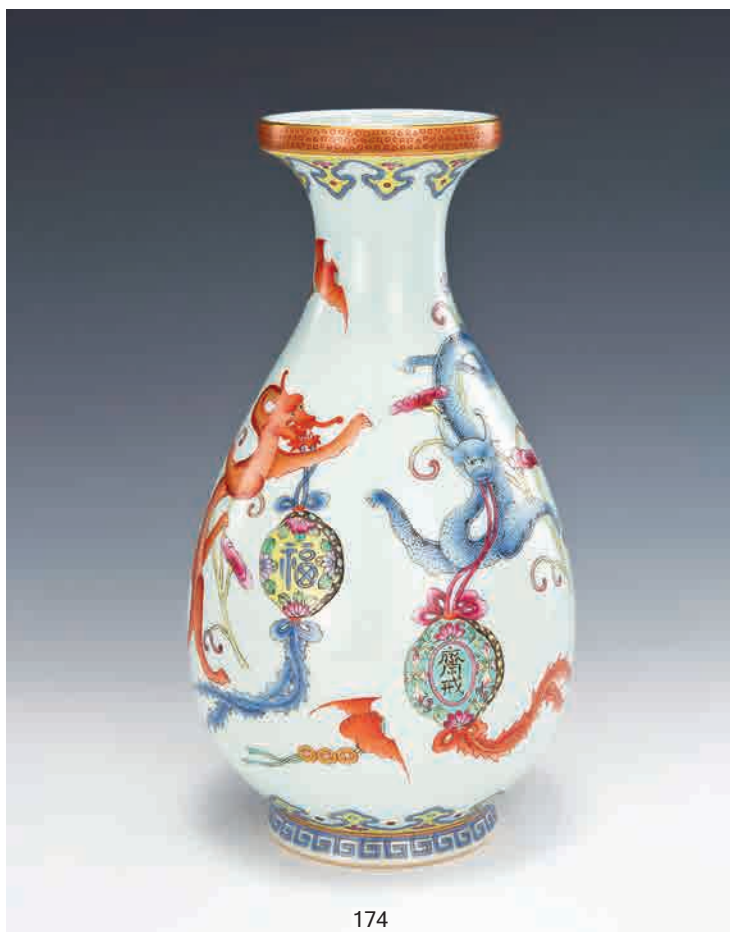
**173**

A MASSIVE FAMILLE-ROSE VASE, QIANLONG MARK, FINELY DECORATED WITH PANELS OF LANDSCAPE AND FIGURES, H: 41 CM.

七十年代 乾隆年製款 重工錦地粉彩開光人物雙獸耳大瓶 (瓷廠老藝人作品)

HK\$8,000 - \$10,000





**174**  
A FAMILLE-ROSE YUHUCHUN PING,  
QIANLONG MARK, FINELY DECORATED  
WITH DRAGONS, H: 25 CM.  
乾隆款 粉彩龍紋玉壺春瓶

HK\$2,000 - \$4,000

**175**  
A GROUP OF SIX DOUCAI DISHES,  
GUANGXU MARK AND PERIOD, EACH  
FINELY DECORATED WITH BATS AND  
CLOUD, 24 X 16 CM.  
光緒 青花雲蝠斗彩盤一組六件

HK\$2,000 - \$4,000







176



177

**176**  
A BLUE AND WHITE YUHUCHUN  
PING, QIANLONG MARK, FINELY  
DECORATED WITH PLANTAIN,  
BAMBOO AND ROCK, H: 29 CM.  
乾隆款 青花蕉葉竹石紋玉壺春瓶

HK\$2,000 - \$4,000

**177**  
A DOUCAI YUHUCHUN  
PING, FINELY DECORATED WITH  
LANDSCAPE AND FIGURES,  
H: 25 CM.  
斗彩山水人物玉壺春瓶

HK\$2,000 - \$4,000



178



179

**178**  
A BLUE GROUND FAMILLE-  
BEAD STAND, QIANLONG  
MARK, FINELY DECORATED  
WITH FLOWERS, H: 31 CM.  
乾隆款 藍錦地開光帽筒

HK\$2,000 - \$4,000

**179**  
A BLUE AND WHITE CORAL  
RED "DRAGON" VASE,  
GUANGXU MARK, H: 31 CM.  
光緒款 青花加彩畫紅龍紋長頸瓶

HK\$2,000 - \$4,000





180



181



182

**180**

A WHITE GLAZED DISH, MING DYNASTY, 20 X 4.5 CM.

明 白釉碟

HK\$1,000 - \$2,000

**181**

A LONGQUAN CELADON GLAZED BOWL, SONG DYNASTY, D: 16.5 CM.

南宋 龍泉釉碗

HK\$3,000 - \$4,000

**182**

A JUNYAO GLAZED BOWL, YUAN DYNASTY, 16.5 X 6.5 CM.

元 均紅釉小碗

HK\$2,500 - \$3,500



183



184

**183**

A YINGQING GLAZED BOWL, SONG DYNASTY, 17 X 5.5 CM.

宋 影青釉碗

HK\$1,500 - \$2,500

**184**

A YINGQING GLAZED EWER WITH COVER, SONG DYNASTY, H: 5 CM.

宋 影青水注

HK\$1,500 - \$2,500





185



186



187



188



189



190

**185**

A BLUE AND WHITE HEXAGONAL FLOWER POT, 19TH CENTURY, FINELY DECORATED WITH LANDSCAPE, 19.5 X 12 CM.

十九世紀 青花山水六角花盆

HK\$1,500 - \$2,500

**186**

A BLUE AND WHITE FLOWER POT, 19TH CENTURY, FINELY DECORATED WITH PRECIOUS OBJECTS, 14 X 13 CM.

十九世紀 青花博古紋花盆

HK\$1,500 - \$2,500

**187**

A BLUE AND WHITE "PHOENIX" FLOWER POT, REPUBLIC OF CHINA, H: 12 CM.

民國 雍正款 青花龍鳳紋花盆

HK\$1,500 - \$2,500

**188**

A BLUE AND WHITE FLOWER POT AND STAND, 18TH CENTURY, FINELY DECORATED WITH LOTUS SCROLL AND RUYI HEAD, H: 24.5 CM.

乾隆 青花纏枝蓮紋花盆連碟

HK\$4,000 - \$6,000

**189**

A PAIR OF CORAL RED FLOWER POTS, 19TH CENTURY, H: 16 CM.

十九世紀 珊瑚紅花盆一對

HK\$9,000 - \$12,000

**190**

A COBALT BLUE GLAZED JAR, 18TH CENTURY, H: 17 CM.

十八世紀 藍釉罐

HK\$1,500 - \$2,500





191



192



193



194



195



196

**191**

A FAMILLE-ROSE FLOWER POT, REPUBLIC OF CHINA, FINELY DECORATED WITH PINE AND CRANE, 11 CM.

民國 天洋德慶仁出品 粉彩松鶴紋花盆

HK\$1,500 - \$2,500

**192**

A FAMILLE-ROSE FLOWER POT, QIANLONG MARK, FINELY DECORATED WITH FLOWERS, 10 CM.

乾隆款 粉彩錦地花卉紋花盆

HK\$1,500 - \$2,500

**193**

A FAMILLE-ROSE FLOWER POT, 19TH CENTURY, FINELY DECORATED WITH FLOWERS, 13.5 CM.

民國 粉彩花卉紋花盆

HK\$1,500 - \$2,500

**194**

A FAMILLE-ROSE FLOWER POT, 19TH CENTURY, FINELY DECORATED WITH FLOWERS, 14 CM.

十九世紀 粉彩花卉紋花盆

HK\$1,500 - \$2,500

**195**

A FAMILLE-ROSE FLOWER POT, 19TH CENTURY, FINELY DECORATED WITH FLOWERS, 18 CM.

光緒 粉彩花卉紋花盆

HK\$2,000 - \$3,000

**196**

A YELLOW GROUND FAMILLE-ROSE FLOWER POT, 19TH CENTURY, FINELY DECORATED WITH FLOWERS AND BIRDS, 12.5 CM.

十九世紀 黃錦地開光花鳥紋盆

HK\$4,000 - \$6,000





197



199



201

**197**  
A BLUE AND WHITE DISH, MING DYNASTY, FINELY  
DECORATED WITH KILIN, 24 X 3 CM.  
明 青花麒麟紋盤

HK\$2,500 - \$3,500

**198**  
A BLUE AND WHITE DISH, 18TH CENTURY, FINELY  
DECORATED WITH FLORAL, 23 X 4 CM.  
十八世紀 青花花卉紋盤

HK\$4,000 - \$6,000

**199**  
A BLUE AND WHITE DISH, KANGXI PERIOD, FINELY  
DECORATED WITH CHRYSANTHEMUM, 23 X 3 CM  
康熙 青花菊花盤

HK\$2,000 - \$3,000



198



200



202

**200**  
A BLUE AND WHITE DISH, KANGXI PERIOD, FINELY  
DECORATED WITH A BANQUET WITH FLOWER,  
21.5 X 3.5 CM.  
康熙 青花花藍紋盤

HK\$2,000 - \$3,000

**201**  
A BLUE AND WHITE DISH, KANGXI PERIOD, FINELY  
DECORATED WITH CHRYSANTHEMUM, 20 X 4 CM.  
康熙 青花菊花紋盤

HK\$3,000 - \$4,000

**202**  
A BLUE AND WHITE DISH, 18TH CENTURY, FINELY  
DECORATED WITH FLOWERS AND BUTTERFLIES,  
8.5 X 3.5 CM.  
十八世紀 青花花蝶紋盤

HK\$1,000 - \$2,000





203



204



205



206



207



208

**203**

A BLUE AND WHITE DISH, 18TH CENTURY, FINELY DECORATED WITH PLUM BLOSSOM AND MAGPIES, 26.5 X 5 CM.

十八世紀 青花喜鵲得梅盤

HK\$4,000 - \$6,000

**204**

A BLUE AND WHITE DISH, 18TH CENTURY, FINELY DECORATED WITH PINE AND DEER, 28 X 6 CM.

十八世紀 青花松鹿紋盤

HK\$3,500 - \$4,500

**205**

A BLUE AND WHITE DISH, 18TH CENTURY, FINELY DECORATED WITH PEONY AND CRANE, 26 X 5.5 CM.

十八世紀 青花牡丹鶴紋大盤

HK\$6,000 - \$8,000

**206**

A BLUE AND WHITE VASE, LATE QING, FINELY DECORATED WITH FLOWERS AND BUTTERFLIES, H: 27.5 CM.

晚清 青花花蝶紋瓶

HK\$9,000 - \$12,000

**207**

A BLUE AND WHITE FLOWER POT, KANGXI MARK, 19TH CENTURY, FINELY DECORATED WITH LANDSCAPE AND FIGURES, 13 CM.

十九世紀 康熙 青花山水人物小花盆

HK\$1,500 - \$2,500

**208**

A BLUE AND WHITE BASIN AND COVER, 18TH CENTURY, FINELY DECORATED WITH PLUM BLOSSOM, 18 X 21.5 CM.

十八世紀 青花梅花紋蓋盅

HK\$4,000 - \$6,000

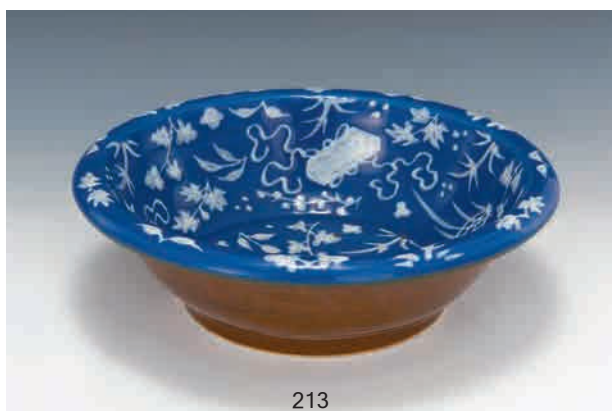




209



211



213

**209**

A BLUE GROUND WHITE DECORATED FLOWER POT, 19TH CENTURY, 12 X 17 CM.

十九世紀 藍地反白花卉角盆

HK\$1,500 - \$2,500

**210**

A PAIR OF WHITE GLAZED VASES, LATE MING, H: 13 & 13.5 CM.

晚明 醬口白釉瓶一對

HK\$1,500 - \$2,500

**211**

A PAIR OF FAMILLE-ROSE FLOWER POTS, REPUBLIC OF CHINA, EACH FINELY DECORATED WITH FLOWERS, D: 14 CM.

民國 粉彩花卉紋花盆一對

HK\$6,000 - \$8,000



210



212



214

**212**

A GROUP OF THREE FLOWER POTS, 16 X 17, 13.5 X 19.5 & 11.5 X 17 CM.

光緒 珊瑚紅開光花鳥花盆，乾隆款 粉彩牡丹壽石花盆和民國 童子雙喜紋花盆

HK\$2,000 - \$3,000

**213**

A BROWNISH GLAZED BASIN, 18TH CENTURY, INSIDE DECORATED ON A LIGHT BLUE GROUND WHITE DECORATED WITH LOTUS SCROLL, 28 X 8.5 CM.

十八世紀 外紫金釉藍地反白紋荷花吉祥紋盤

HK\$3,000 - \$4,000

**214**

A GREEN GLAZED SIWAN POTTERY VASE, 19TH CENTURY, H: 33.5 CM.

早十九世紀 石灣哥綠釉雙耳瓶

HK\$6,000 - \$8,000





215

A FAMILLE-ROSE FLOWER POT WITH STAND, HONGXIAN MARK, FINELY DECORATED WITH CLUSTER OF FLOWERS, H: 16.5 CM.

洪憲 粉彩纏枝蓮紋花盆

HK\$4,000 - \$6,000



216

A FAMILLE-ROSE FLOWER POT AND STAND, GUANGXU MARK AND PERIOD, FINELY DECORATED WITH FLOWERS AND GOLD FISHES, H: 18 CM.

光緒 粉彩花卉紋花盆連托

HK\$6,000 - \$8,000



217

A FAMILLE-ROSE FLOWER POT, REPUBLIC OF CHINA, FINELY DECORATED WITH FLOWER AND INSCRIPTIONS, H: 16.5 CM.

民國 粉彩花卉題詩花盆連托

HK\$2,000 - \$3,000





**218**  
A BRONZE MIRROR, HAN DYNASTY, H: 11.5 CM.  
漢 銅鏡

HK\$20,000 - \$30,000



220



221



219

**219**  
A BRONZE FIGURE OF A BUDDHA, NORTHERN QI,  
82 X 24 CM.  
清 銅佛像（北齊造型）

HK\$20,000 - \$30,000

**220**  
A BRONZE DRAGON, QING DYNASTY, 32 X 15 CM.  
清 銅龍件

HK\$3,000 - \$4,000

**221**  
A CARVED SILVER NAME CARD BOX AND COVER,  
QING DYNASTY, 7.5 X 10.5 CM.  
清 銀咭盒

HK\$4,000 - \$6,000





**222**  
A BRONZE RITUAL TRIPOD FOOD VESSEL, HAN  
DYNASTY, 20 X 6 CM.  
漢 青銅三足盤

HK\$5,000 - \$7,000



**223**  
A BRONZE RITUAL TRIPOD FOOD VESSEL, HAN  
DYNASTY, 21.5 X 10 CM.  
漢 青銅三足爐

HK\$5,000 - \$7,000



**224**  
A RARE RITUAL WINE VESSEL, HAN DYNASTY,  
H: 16.5 CM.  
漢 錯金銀青銅提樑壺

HK\$38,000 - \$88,000



**225**  
A GILT COPPER HAND OF A BODHISATTVA, H: 9.2 CM.  
唐 銅佛手

HK\$8,000 - \$22,000



226

A CRAFTED CORAL FIGURE OF A MAIDAN,  
18.5 X 26 CM.

珊瑚仕女件

HK\$100,000 - \$150,000







**229**  
AN EMBELLISHED HARDSTONE ZITAN BOX AND  
COVER, 25 X 25 X 10 CM.  
紫檀木鑲白玉碧玉貝母蓋盒

HK\$30,000 - \$40,000



**230**  
AN UNUSUAL ZITAN FOUR-TIERED FOOD BOX, 33.5 X  
22 CM.  
紫檀四層提盒

HK\$6,000 - \$8,000



**231**  
A BLACKWOOD SEAL CHEST, 25 X 18 X 24 CM.  
酸枝官皮箱

HK\$2,000 - \$3,000





**232**

A BOXWOOD RUYI SCEPTRE, L: 42 CM.  
黃楊木福壽紋如意

HK\$8,000 - \$10,000



**233**

A PAIR OF WOODEN STANDS, 45.5 X  
30 X 9.5 CM.  
木几一對

HK\$4,000 - \$6,000



**234**

A CARVED BAMBOO WRISTREST, FINELY  
CARVED WITH ZHANG DAQIAN  
CALLIGRAPHY, H: 22 CM.  
竹雕張大千書法腕鎮

HK\$2,000 - \$3,000





**237**  
AN UNUSUAL CARVED ZITAN BRUSHPOT,  
14.9 X 15.5 CM.  
紫檀木樹幹筆筒

HK\$4,000 - \$6,000



**238**  
A CARVED HARDWOOD BRUSHPOT, 27 X 19.5 CM.  
檀木刻花花鳥紋筆筒

HK\$5,000 - \$7,000



**239**  
A CARVED BOXWOOD PICTURE FRAME, FINELY CARVED  
WITH FIGURES, 21.5 X 33 CM.  
黃楊木刻人物鏡屏

HK\$5,000 - \$7,000



**240**  
AN EMBELLISHED WITH HARDSTONE ZITAN BRUSHPOT,  
15 X 16.5 CM.  
紫檀木鑲寶石筆筒

HK\$4,000 - \$6,000





241

**241**  
A ZITAN FIVE FOLDED PANELS SET WITH IVORY  
PLAQUE, 38.5 X 38 CM.  
紫檀木鑲象牙博古五連屏

HK\$50,000 - \$70,000



242

**242**  
A CARVED IVORY VASE, FINELY CARVED WITH  
LANDSCAPE AND FIGURES, H: 22.2 CM.  
象牙雕活環開光人物瓶

HK\$80,000 - \$100,000





**243**  
A SILK EMBROIDERY, QING DYNASTY,  
FINELY DECORATED WITH PHOENIX, 29.5 X 26.5 CM.  
清 二品文官錦雞補服掛屏

HK\$8,000 - \$10,000



**244**  
A JAPANESE SILK EMBROIDERY WITH FRAME,  
27.3 X 34.8  
日本 線繡掛屏

HK\$8,000 - \$10,000

注解：

清代文官補服刺繡採圖慣例

- 一品 仙鶴
- 二品 錦雞
- 三品 孔雀
- 四品 鴛鴦
- 五品 白鵲
- 六品 鸞鷟
- 七品 鸂鶒
- 八品 鸂鶒
- 九品 藍雀

另外武官補服刺繡採圖慣例

- 一品 麒麟
- 二品 獅子
- 三品 豹
- 四品 虎
- 五品 熊罴
- 六品 彪
- 七品 犀牛
- 八品 犀牛
- 九品 海馬



**245**  
A SET OF FRAME BONE MAH-JONG GAME, 2.5 X 1.8 X  
1.2 CM.  
竹鑲骨麻雀

HK\$3,000 - \$4,000



**246**  
A PAIR OF CLOISONNE ENAMEL SQUARE DISHES,  
9.5 X 10 CM.  
銅胎琺瑯彩方盤一對

HK\$2,000 - \$3,000





**247**  
A RUSSET AGATE SNUFF BOTTLE,  
QING DYNASTY, FINELY CARVED  
WITH MELONS AND BUTTERFLIES,  
H: 7 CM.  
清 瑪瑙巧色瓜蝶綿綿煙壺

HK\$6,000 - \$9,000



**248**  
A CARVED SMOKE QUARTZ SNUFF  
BOTTLE, QING DYNASTY, H: 6 CM.  
清 墨晶人物煙壺

HK\$7,000 - \$10,000



**249**  
AN UNUSUAL CARVED  
AGATE SNUFF BOTTLE, QING  
DYNASTY, FINELY CARVED WITH  
LANDSCAPE AND FIGURE, H: 7 CM.  
清 瑪瑙巧色人物煙壺

HK\$6,000 - \$8,000



250



251

**251**  
A SOAPSTONE CARVING GROUP OF FRUIT WITH  
PLATE, 12.5 X 6.5 X 8.8 CM.  
壽山石刻果盤座件

HK\$4,000 - \$6,000

**250**  
A MASSIVE SOAPSTONE CARVING OF A SEATED  
GUANYIN, 37 X 63.5 CM.  
壽山石刻觀音座像

HK\$10,000 - \$15,000





**252**  
AN AGATE BEAD BRACELAT,  
D: 2 CM.  
瑪瑙手串

HK\$1,000 - \$2,000



**253**  
AN AMBER BEAD NECKLACE,  
L: 75CM.  
琥珀朝珠

HK\$3,000 - \$4,000

**254**  
AN AMBER BEAD NECKLACE, 0.8  
TO 2.5 CM.  
琥珀鍊

HK\$8,000 - \$10,000





**235**  
A HARDWOOD LONG TABLE SEAT WITH CLOISONNE  
ENAMEL PLAQUE, 137 X 42 X 88 CM.  
實木嵌景泰藍琴桌

HK\$8,000 - \$10,000



**236**  
A BLACK WOOD LONG TABLE, 49.5 X 99 X 83 CM.  
酸枝琴桌

HK\$5,000 - \$7,000





**227**  
A CARVED ZITAN BOX AND COVER SET WITH A  
SCALLY DRAGON BOXWOOD, 30 X 21 X 8.5 CM.  
紫檀木鑲黃楊木龍紋蓋盒

HK\$30,000 - \$40,000



**228**  
A CARVED ZITAN CHEST AND COVER SET  
WITH A SCALLY DRAGON BOXWOOD PLAQUE,  
28 X 43 X 21 CM.  
紫檀木鑲黃楊木龍紋蓋盒

HK\$62,000 - \$80,000





PAIDEGAO