

Fine Chinese Ceramics & Works of Art

Thursday, 28 November 2013 Hong Kong



PAIDEGAO



1



2



3

1
A WHITE JADE VASE, QING DYNASTY,
H: 9.8 CM.
清 白玉活環瓶

HK\$40,000-60,000

2
A WHITE JADE VASE AND COVER, QING DYNASTY,
5.8 X 9.2 CM.
清 白玉蓋瓶

HK\$40,000-60,000

3
A WHITE JADE SEAL, QING DYNASTY,
2.7 X 1.4 X 4.5 CM.
清 白玉印

HK\$20,000-30,000



4



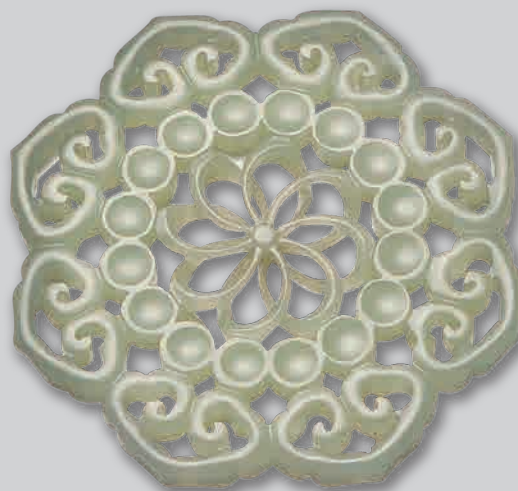
5



6



7



8

4
A WHITE JADE PENDANT, QING DYNASTY, FINELY
CARVED WITH BOY AND FLOWER BOUQUET,
H: 5.4 CM.
清 白玉童子獻花牌

HK\$10,000-20,000

7
A GREENISH JADE FIGURE OF A CAT, QING DYNASTY,
H: 5.8 CM.
清 青白玉貓件

HK\$3,000-5,000

5
A WHITE JADE PENDANT, QING DYNASTY, FINELY
CARVED WITH SQUIRREL AND GRAPES, H: 6.1 CM.
清 白玉葡萄松鼠件

HK\$10,000-20,000

8
A WHITE JADE PENDANT CARVED WITH RUYI,
H: 6.9 CM.
白玉透雕如意紋牌

HK\$6,000-8,000

6
A WHITE JADE PENDANT OF LUOHAN, QING DYNASTY,
3 X 4 CM.
清 白玉羅漢件

HK\$4,000-6,000



9



10



11

9
A RETICULATED WHITE JADE
PLAQUE, QING DYNASTY, FINELY
CARVED WITH PHOENIX AND
PEONY, 3.8 X 5.9 CM.
清 白玉透雕牡丹鳳牌

HK\$20,000-40,000

10
A WHITE JADE "ZI GANG"
PENDANT, QING DYNASTY, FINELY
CARVED WITH CHILDREN AND
INSCRIPTION, 6.4 X 4.3 CM.
清 白玉榴開百子牌

HK\$30,000-50,000

11
A WHITE JADE PENDANT, QING
DYNASTY, FINELY CARVED WITH
RUYI AND PRECIOUS OBJECTS,
3.4 X 4.9 CM.
清 白玉百事如意牌

HK\$30,000-50,000



背面



正面

12

A WHITE JADE "ZI GANG" PLAQUE, QING DYNASTY, FINELY CARVED WITH FIGURE AND INSCRIPTIONS, 4.3 X 5.6 CM.

清 白玉子岡人物牌

HK\$50,000-70,000



13

A WHITE JADE PENDANT, QING DYNASTY, FINELY CARVED WITH AN IMMORTAL AND INSCRIPTIONS, 5.4 X 5.8 CM.

清 白玉仙人乘槎牌

HK\$50,000-70,000



14



15



16



17

14

A WHITE JADE PENDANT, QING DYNASTY, FINELY CARVED WITH BAT AND LINGZHI, 3.5 X 5.5 CM.

清 白玉福至心靈件

HK\$20,000-30,000

16

A WHITE JADE PENDANT, QING DYNASTY, FINELY CARVED WITH FU AND SHOU, H: 6 CM.

清 白玉福壽牌

HK\$15,000-20,000

15

A WHITE JADE PENDANT, MING DYNASTY, H: 4.5 CM.

明 白玉珮

HK\$10,000-20,000

17

A CARVED WHITE JADE "CHILONG" PENDANT, QING DYNASTY, D: 5.3 CM.

清 白玉龍紋環

HK\$15,000-25,000



正面



背面

18
AN AGATE PLAQUE, YUAN DYNASTY, 8 X 5.6 CM.
元 刻獅子滾球瑤瑪牌

HK\$20,000-40,000



19
A GREENISH BROWN JADE BANGLE, QING DYNASTY,
D: 7.6 CM.
清 古玉博古龍紋手鐲

HK\$15,000-25,000



20
A SPINACH GREEN JADE PENDANT, QING DYNASTY,
FINELY CARVED WITH FU LIONS, H: 5.6 CM.
清 碧玉獅子滾球牌

HK\$10,000-20,000



21

21
A GROUP OF THREE SOAPSTONE SEALS AND WASHER,
2.8 X 2.8 X 4 TO 12 X 9 X 4 CM.
壽山石印章兩件及壽山石葡萄松鼠水洗

HK\$2,000-3,000



21



21



22

22
A CARVED SHOUSHAN GROUP, QING DYNASTY, FINELY
CARVED WITH FIGURES, 6.6 X 8.1 CM.
清 壽山石人物

HK\$15,000-25,000



23

A GROUP OF SEVEN JADE CARVINGS AND A CRYSTAL CARVING, H: 4.4 TO 6.5 CM.

水晶蓋及玉件八件

HK\$2,000-3,000



24

A YELLOW JADE DOG, MING DYNASTY, 7.3 X 4.5 CM.

明 黃玉犬

HK\$150,000-250,000



25
A GROUP OF THREE JADE CARVINGS CICADAS, H: 7 TO 7.8 CM.
蟬件三件

HK\$1,000-2,000



26
A GROUP OF SIX JADE CARVINGS, H: 4.7 TO 6.5 CM.
碧玉及白玉件六件

HK\$2,000-3,000



27

A CARVED RUSSET AGATE SNUFF BOTTLE, QING DYNASTY, FINELY CARVED WITH WILD GEESE, H: 6.4 CM.

清 瑪瑙飛鳴宿食煙壺

HK\$20,000-30,000

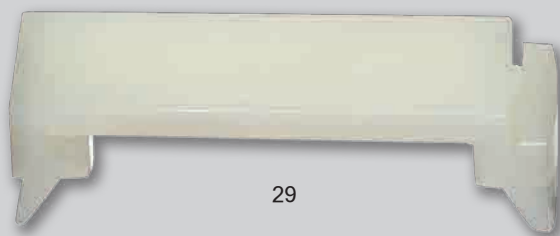


28

A CARVED YELLOW JADE SNUFF BOTTLE, QING DYNASTY, FINELY CARVED WITH CHILONG, H: 7 CM.

清 黃玉博古龍紋煙壺

HK\$80,000-100,000



29

29
A WHITE JADE PEN REST, QING DYNASTY, 2 X 7.3
X 2.2 CM.
清 白玉筆乘

HK\$20,000-30,000



30



30



30



30

30
A GROUP OF FOUR WHITE JADE BANGLES, D: 7.3 TO 7.8 CM.
白玉手鐲四件

HK\$4,000-6,000



31
A GROUP OF THREE JADE CARVINGS, H: 9.9 TO 11 CM.
白玉環，龍紋牌及翡翠件共三件

HK\$5,000-7,000



32
A GREENISH JADE VASE WITH DRAGON HANDLES,
H: 9.5 CM.
青白玉雙龍紋耳瓶

HK\$4,000-6,000



33
A CARVED JADE CUP WITH RETICULATED SHOU
CHINESE CHARACTERS, REPUBLIC OF CHINA,
8.5 X 4.3 CM.
民國 白玉雙壽杯連座

HK\$3,000-5,000



34
A SET OF SEVEN PIECES BLACK GROUND GILT DECORATED LACQUER
SCHOLAR'S SET, H: 10 TO 44 CM.
黑漆描金彩繪龍紋文房一套七件

HK\$2,000-3,000

35

A RED JADEITE NECKLACE, L: 52.5 CM.
紅翡翠念珠鍊

HK\$2,000-3,000

36

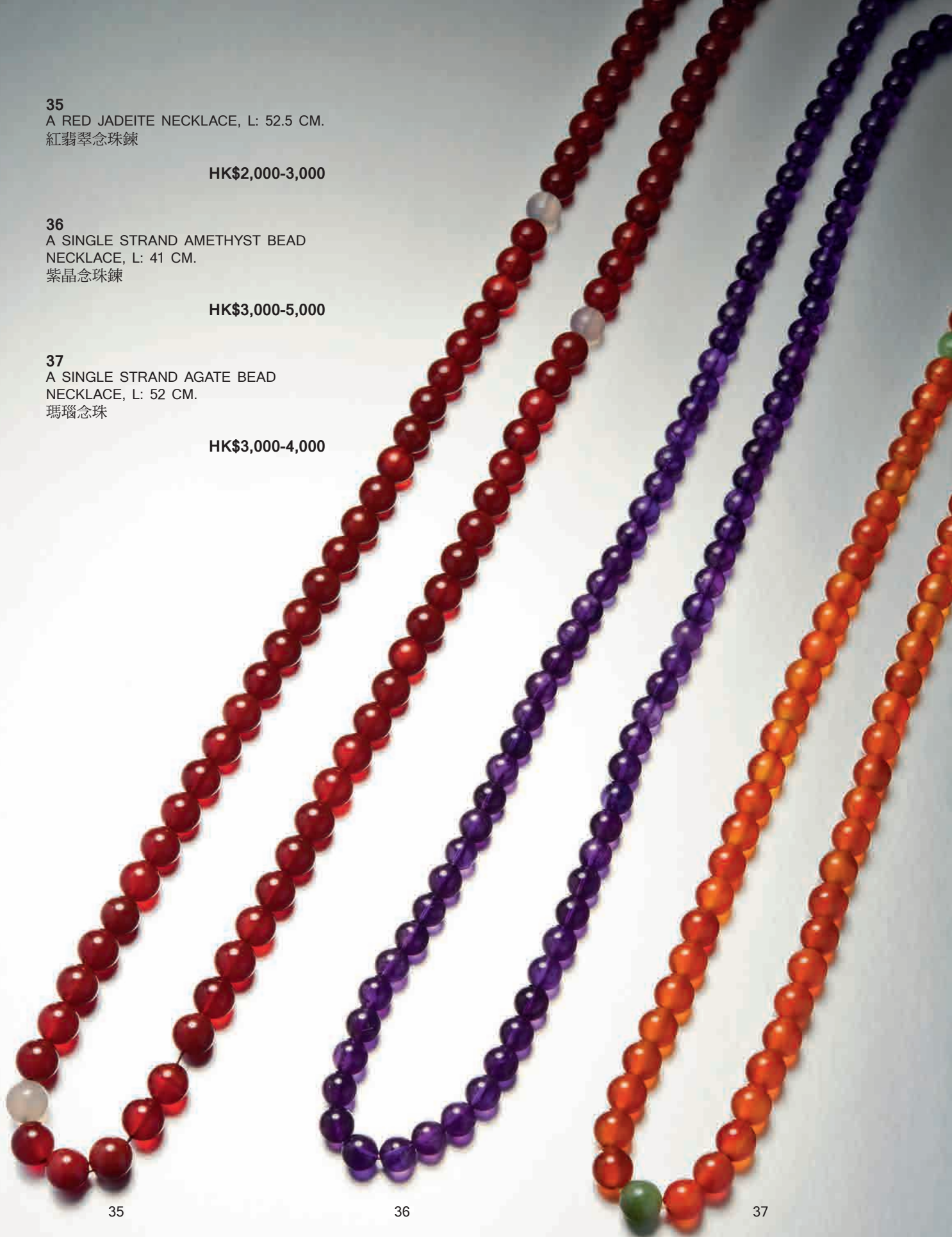
A SINGLE STRAND AMETHYST BEAD
NECKLACE, L: 41 CM.
紫晶念珠鍊

HK\$3,000-5,000

37

A SINGLE STRAND AGATE BEAD
NECKLACE, L: 52 CM.
瑪瑙念珠

HK\$3,000-4,000





38
A FAMILLE-ROSE WASHER,
REPUBLIC OF CHINA, H: 6.5 CM.
《南昌進化瓷社》 粉彩花鳥水盂

HK\$500-700



39
A FAMILLE-ROSE VASE, H: 13 CM.
粉彩花鳥瓶

HK\$500-700



40
A FAMILLE-ROSE WASHER, FINELY
DECORATED WITH FLOWERS AND
BIRDS, H: 8.5 CM.
官窯內進 粉彩花鳥紋水盂

HK\$500-700



41
A FAMILLE-ROSE SEAL PASTE BOX AND COVER,
D: 8.5 CM.
山水人物印盒

HK\$500-700



42
A BLUE AND WHITE SEAL PASTE BOX AND COVER,
JIANG XI CI YE GONG SI MARK, FINELY DECORATED
WITH FLOWERS AND BIRDS, D: 8 CM.
江西瓷業公司 青花花鳥紋印盒

HK\$4,000-8,000



43
A FAMILLE-ROSE SAUCER DISH, DAOGUANG MARK
AND PERIOD, FINELY DECORATED WITH FU AND SHOU
CHINESE CHARACTERS, D: 18.7 CM.
道光 粉彩福壽紋盤

HK\$4,000-6,000



44
A FAMILLE-ROSE VASE, QIANLONG MARK, FINELY
DECORATED WITH FIGURES, H: 19.5 CM.
乾隆款 粉彩人物瓶

HK\$5,000-7,000



45
A FAMILLE-ROSE VASE, QIANLONG MARK, 19TH
CENTURY, FINELY DECORATED WITH ZHONGGUI AND
DEMONS H: 15 CM.
十九世紀 乾隆款 粉彩鍾馗人物瓶

HK\$5,000-7,000



46
A FAMILLE-ROSE VASE, QIANLONG MARK, 19TH
CENTURY, FINELY DECORATED WITH FIGURES, H: 20 CM.
十九世紀 乾隆款 粉彩人物瓶

HK\$6,000-8,000



47
A SANCAI FIGURE OF DRUNKEN SCHOLAR, 20 X 14.5 CM.
十九世紀 素三彩太白醉酒人物

HK\$4,000-6,000



48
A RUBY RED GROUND FAMILLE-ROSE BOWL, REPUBLIC OF CHINA, FINELY DECORATED WITH FLOWERS, 10.9 X 5 CM.
民國 胭脂紅開光花卉紋碗

HK\$2,000-3,000



49
A FAMILLE-ROSE VASE, QIANLONG MARK, FINELY DECORATED WITH FLOWERS AND BIRDS, H: 30 CM.
乾隆款 粉彩花鳥題詩瓶

HK\$3,000-4,000



50

A GROUP OF TEN PIECES OF FAMILLE-ROSE DISHES, EACH FINELY DECORATED WITH FLOWERS AND INSCRIPTIONS, 14.4 CM.

艷治宜人 粉彩盤十件

HK\$3,000-5,000



51

A MASSIVE WUCAI WATER BASIN, 19TH CENTURY, FINELY DECORATED WITH EIGHTEEN LUOHANS AND LANDSCAPE, 46.5 X 40.5 CM.

十九世紀 五彩十八羅漢紋魚缸

HK\$20,000-30,000



52

A SET OF WOODEN FOLDING TABLE SCREENS WITH FAMILLE-ROSE PLAQUES, 12 X 20 CM.

民國 粉彩山水四連屏連木框

HK\$6,000-8,000



53

TEN SETS OF FAMILLE-ROSE
TEA BOWLS WITH COVERS AND
PLATES, JIANG XI YING HUA
XUAN CHU PIN, EACH FINELY
DECORATED WITH FLOWERS AND
INSCRIPTIONS,
11 X 10 CM.

江西映華軒出品 粉彩茶盅連托盤
十套

HK\$6,000-8,000



54

A GROUP OF NINE PIECES OF
FAMILLE-ROSE DISHES, EACH
FINELY DECORATED WITH
FLOWERS, 14.4 & 18 CM.

艷治宜人 粉彩盤七件及粉彩大盤
兩件

HK\$3,000-5,000



55

A GROUP OF TEN FAMILLE-ROSE
BOWLS, EACH FINELY DECORATED
WITH FLOWERS, D: 9 CM.

粉彩花卉紋小碗十件

HK\$1,500-2,000

**56**

A GROUP OF SIX FAMILLE-ROSE SAUCER DISHES, EACH FINELY DECORATED WITH FLOWERS, D: 24 CM.

江西名瓷 粉彩花卉紋盤六件

HK\$3,000-5,000

**57**

FIVE SETS OF TEA BOWLS WITH COVERS AND PLATES, JIANG XI MING CI MARK, EACH FINELY DECORATED WITH FLOWERS AND INSCRIPTIONS, 9 X 8.5 CM.

江西名瓷 粉彩花卉茶盅連托五套

HK\$2,000-3,000

**58**

A GROUP OF TEN FAMILLE-ROSE BOWLS, EACH FINELY DECORATED WITH FLOWERS AND INSCRIPTIONS, D: 12.5 TO 18.7 CM.

艷治宜人 粉彩碗十件

HK\$3,000-5,000



59
A GROUP OF TEN PIECES OF
FAMILLE-ROSE DISHES, EACH
FINELY DECORATED WITH
FLOWERS AND INSCRIPTIONS,
D: 14.4 CM.
艷治宜人 粉彩盤十件

HK\$3,000-5,000



60
NINE SETS OF TEA BOWLS WITH
COVERS AND PLATES, JIANG
XI YING HUA XUAN CHU PIN,
EACH FINELY DECORATED WITH
FLOWERS AND INSCRIPTIONS,
11 X 10 CM.
江西映華軒出品 粉彩茶盅連蓋盤
九套

HK\$5,000-7,000



61
A GROUP OF TEN FAMILLE-RSOE
BOWLS, JIANG XI MING CI MARK,
EACH FINELY DECORATED WITH
FLOWERS, D: 10.6 CM.
江西名瓷 粉彩碗十件

HK\$2,000-3,000



62

A SET OF FIVE PIECES OF FAMILLE-ROSE TEA SERVICES INCLUDING TEA POT, BOWL, SUGAR BASIN, TEA CUP WITH SAUCER DISH AND MILK JAR, H: 4.5 TO 22 CM.

1970 年代 粉彩杯碟茶具一套五件

HK\$4,000-6,000



63



63

63

A SET OF SIX TEA CUPS AND DISHES AND SIXTEEN PIECES OF SAUCER DISHES, Dish: D: 13.5 TO 19 CM, Cup: 11 X 5.3 CM.

粉彩雞紋盤十六件及茶杯連碟六套

HK\$2,200-2,600



64

A GROUP OF ELEVEN PIECES OF FAMILLE-ROSE DISHES, JIANG XI MING CI MARK, EACH FINELY DECORATED WITH FLOWERS, D: 10 TO 14 CM.

江西名瓷 粉彩小盤十一件

HK\$1,800-2,200



65

A GROUP OF FORTY THREE PIECES OF FAMILLE-ROSE SPOONS, EACH FINELY DECORATED WITH FLOWERS, 8.5 X 15.5 CM.

粉彩湯匙四十三件

HK\$1,000-2,000



66

A GROUP OF TWENTY-ONE PIECES OF FAMILLE-ROSE DISHES, JIANG XI ZHEN PIN MARK, EACH FINELY DECORATED WITH FLOWERS, D: 6.5 TO 8 CM.

江西珍品 粉彩小盤十二件及粉彩小碟九件

HK\$1,500-2,000



67

A FAMILLE-ROSE WASHER, FINELY DECORATED WITH FLOWER AND INSECTS, H: 8 CM.

景春 粉彩蟲草花卉紋水洗

HK\$1,000-1,500



68

A GROUP OF TWO FAMILLE-ROSE SEAL PASTE BOXES AND COVERS, BY LI MINGYU, REPUBLIC OF CHINA, EACH FINELY DECORATED WITH LANDSCAPE AND INSCRIPTIONS, 6.5 X 3 CM.

民國 《江西新中華出品》款 李明玉
山水人物印盒二件

HK\$3,000-5,000



69

A FAMILLE-ROSE TEA POT, JIANG XI MING CI MARK, FINELY DECORATED WITH FIGURES, 14 X 17 CM.

江西名瓷 楊正順出品 粉彩人物茶壺

HK\$2,000-3,000



70

A FAMILLE-ROSE TEA POT, GUANGXU MARK, FINELY DECORATED WITH DRAGON AND PHOENIX, 21.5 X 15 CM.

光緒款 粉彩龍鳳紋茶壺

HK\$2,000-3,000



71
A SET OF TEN SAUCER DISHES,
EACH FINELY DECORATED WITH
ROOSTERS, D: 14 TO 21.5 CM.
粉彩雞紋盤十件

HK\$2,000-3,000



72
A GROUP OF TEN FAMILLE-ROSE
BOWLS, EACH FINELY DECORATED
WITH FLOWERS, D: 12.5 CM.
粉彩花卉紋碗十件

HK\$2,500-3,000



73
A GROUP OF TWELVE FAMILLE-
ROSE BOWLS, EACH FINELY
DECORATED WITH FLOWERS,
9 X 4.52 TO 10.5 X 5 CM.
江西名瓷 粉彩碗九件及粉彩花卉
小碗三件

HK\$1,600-2,200



74
A FAMILLE-ROSE VASE,
LANG SHILING MARK, FINELY
DECORATED WITH PEONIES AND
BUTTERFLIES, H: 22 CM.
郎世靈款 粉彩牡丹蝴蝶紋瓶

HK\$2,000-3,000



75
A YELLOW GROUND FAMILLE-ROSE
VASE, YONG QING CHANG CHUN
MARK, FINELY DECORATED WITH
FLOWERS AND BIRDS, H: 25.5 CM.
永慶長春 黃地墨彩花鳥紋瓶

HK\$2,000-3,000



76
A FAMILLE-ROSE VASE, QIANLONG
MARK, FINELY DECORATED WITH
FIGURES, H: 24 CM.
乾隆款 粉彩人物瓶

HK\$2,000-3,000



77
A FAMILLE-ROSE VASE, QIAN LONG
MARK, FINELY DECORATED WITH
FIGURES, H: 11 CM.
乾隆款 粉彩人物瓶

HK\$2,000-3,000



78
A BLUE AND WHITE VASE, FINELY
DECORATED WITH CHILDREN
AT PLAY AND A LIGHT BROWN
GLAZED BOWL,
10 X 5 & 10 X 17 CM.
青花童子耍樂紋瓶及外啡釉內青花魚
藻紋碗

HK\$2,000-3,000



79
A FAMILLE-ROSE VASE, FINELY
DECORATED WITH LANDSCAPE,
H: 13 CM.
立本作 粉彩山水紋瓶

HK\$1,500-2,000

Paidegao



80

A GROUP OF FAMILLE-ROSE TABLE WARE CONSISTS OF TWENTY FIVE PIECES OF SAUCER DISHES, THREE SETS OF TEA BOWLS AND COVERS, FIVE TEA BOWLS, ONE SAUCER AND ONE CUP, H: 6 TO 14 CM.

粉彩碟二十五件，
茶具三套（一套欠托），茶碗五件，
茶托一件及小茶杯

HK\$500-1,000



81

A GROUP OF SEVEN PIECES OF BLUE AND WHITE DISHES, D: 13 CM.

青花花卉紋小盤七件

HK\$1,000-2,000



82

A PAIR OF RUBY RED GROUND FAMILLE-ROSE CUP, JIANG XI QI CI GONG SI MARK, EACH FINELY DECORATED WITH LANDSCAPE AND FIGURES, 7 X 5.8 CM.

江西瓷器公司 胭脂紅開光山水人物
杯一對

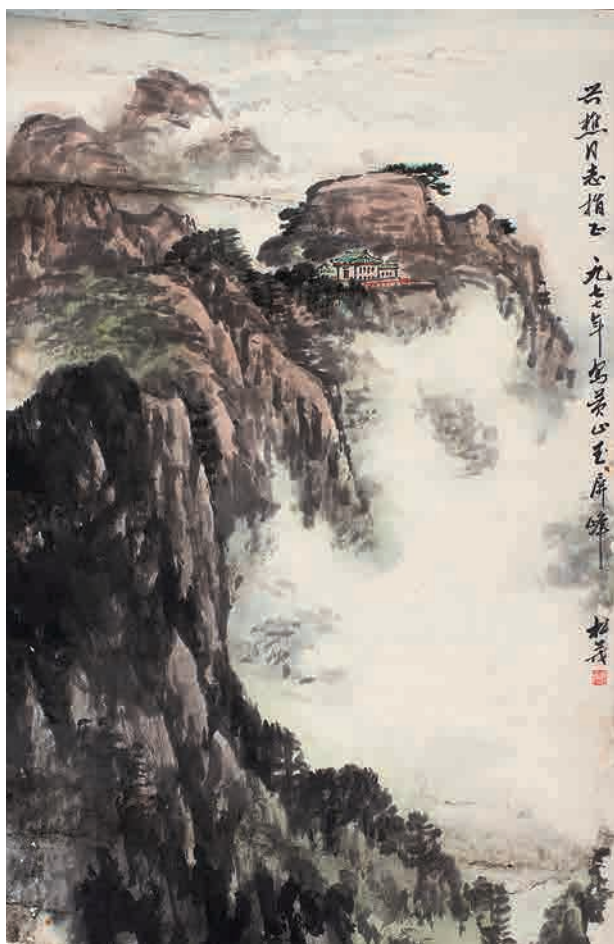
HK\$2,000-3,000



83

A FINE AND RARE FAMILLE-ROSE VASE BY HE XUREN, FINELY
DECORATED WITH WINTER LANDSCAPE AND INSCRIPTIONS, H: 21.5 CM.
何許人 粉彩雪景題詩人物瓶

HK\$250,000-300,000



84
A CHINESE PAINTING BY ZHANG SONGMAO,
TITLE: LANDSCAPE, 45 X 68 CM.
張松茂 山水軸

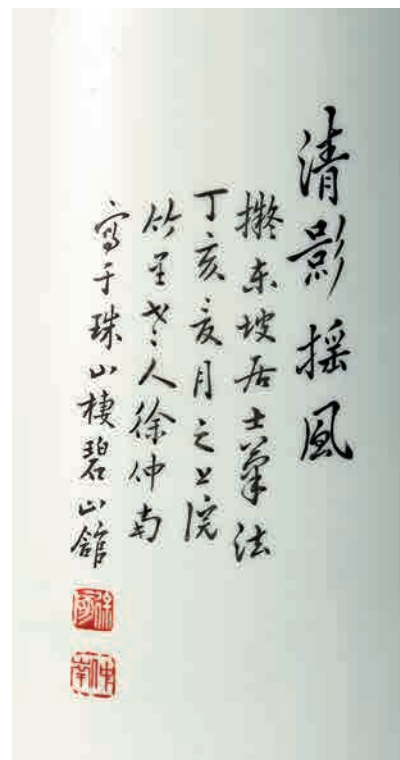
HK\$15,000-30,000

張松茂 (1934-)：江西鄱陽人。擅長陶瓷粉彩人物、山水、鳥畫、雪景。他的作品“紫歸杜懷圖”粉彩瓷板書被當做江西政府送香港特別行政區的禮物。其傳略被記入《中國當代要藝家傳》。其於1954年進入輕工業部陶瓷研究所，從事陶瓷美術研究設計，1959年榮獲“陶瓷美術家”稱號，1986年被評為高級工藝美術師，1988年被授予中國工藝美術大師稱號，1994年享受國務院頒發的政府特殊津貼，同年張松茂之家被評為“陶瓷世家”。



85
A DOUCAI VASE, QIANLONG MARK, FINELY
DECORATED WITH DRAGON AND PHOENIX,
H: 80.5 CM.
乾隆款 斗彩龍鳳紋大瓶

HK\$16,000-26,000



86

A FINE AND RARE FAMILLE-ROSE VASE, BY XU ZHONGNAN, DATED 1947, FINELY DECORATED WITH BAMBOO AND ROCKS WITH INSCRIPTIONS,
H: 36.5 CM.

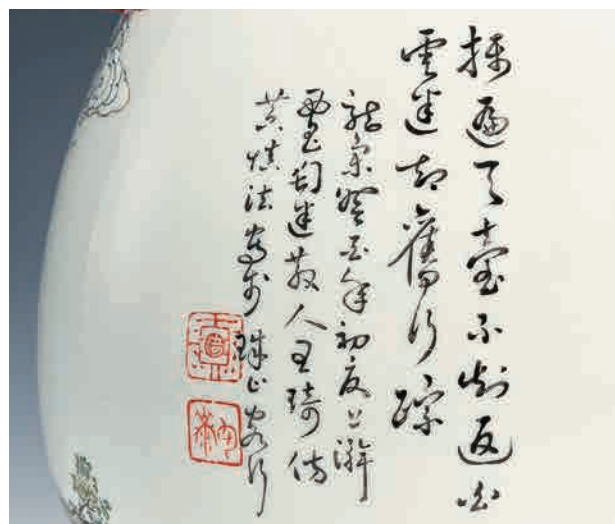
民國（1947年）徐仲南 粉彩竹石題詩雙象耳瓶

HK\$600,000-900,000



87
A PAIR OF FAMILLE-ROSE VASES, BY HE XUREN, DATED 1935, EACH
FINELY PAINTED WITH LANDSCAPE AND INSCRIPTIONS, H: 13 CM.
民國（1935 年）何許人 粉彩雪景人物題詩雙象耳瓶一對

HK\$1,000,000-1,500,000



88

A FINE AND RARE FAMILLE-ROSE VASE BY WANG QI, DATED 1933, FINELY DECORATED WITH FIGURES AND INSCRIPTIONS, H: 34 CM.

民國（1933年）王琦 粉彩採芝題詩雙象耳瓶

HK\$900,000-1,200,000



89
A FAMILLE-ROSE VASE BY CHEN SHUJUAN, FINELY DECORATED WITH LADY
AND LETTER IN STUDY ROOM, H: 47 CM.
陳淑娟 粉彩西廂記瓶

HK\$60,000-80,000

陳淑娟：畢業於景德鎮陶瓷學院藝術系首屆陶瓷藝術學術專業。江西省陶瓷藝術大師、高級工藝美術師、景德鎮市藝術家交流協會理事。她在名師王隆夫、王安維精心指導下，刻苦鑽研，逐步形成融傳統與現代為一體的陶瓷藝術風格。



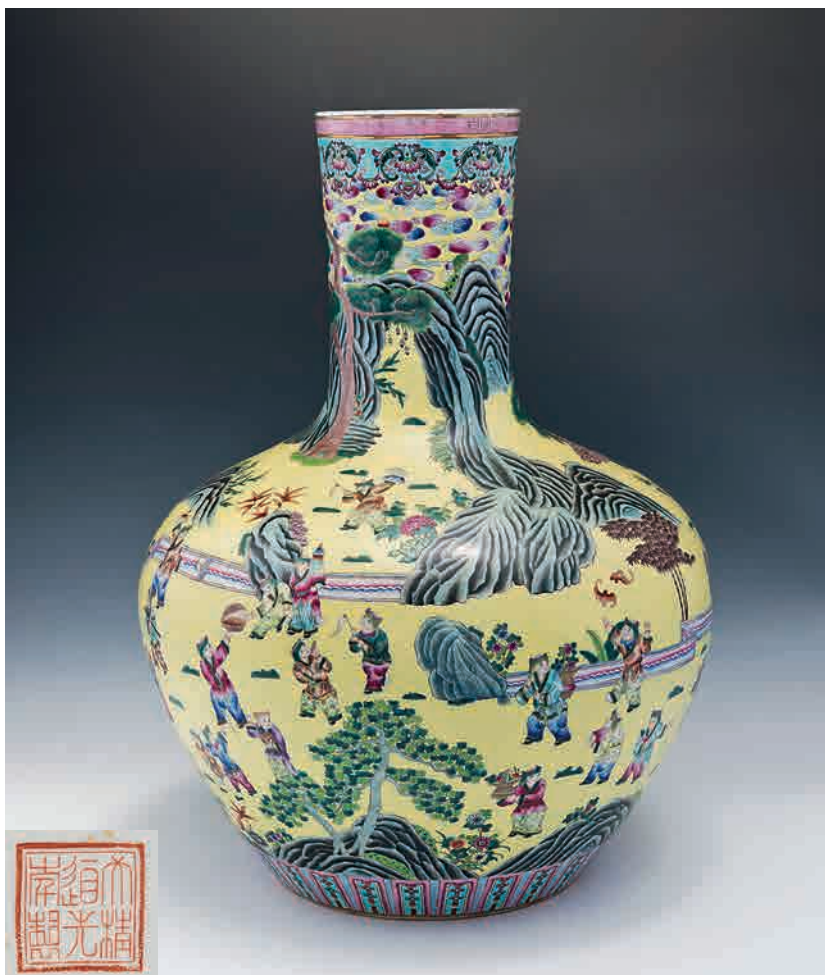


90

A MASSIVE FAMILLE-ROSE BARBED DISH, 19TH CENTURY, PAINTED IN THE CENTER WITH A SCROLLING DRAGON AND PHOENIX CONFRONTING ON A FLAMING PEARL AMIDST BILLOWING CLOUDS, D: 35.5 CM.

十九世紀 粉彩龍鳳紋稜角掛盤
(龍紋底款)

HK\$140,000-180,000



91

A MASSIVE YELLOW GROUND FAMILLE-ROSE BOTTLE VASE, DAOGUANG MARK, REPUBLIC OF CHINA, FINELY DECORATED WITH BOYS AT PLAY WITH GARDEN SCENE, H: 19 CM.

民國 道光款 黃地粉彩百子圖天球瓶

HK\$55,000-75,000



92

A FINE PAIR OF COBALT BLUE GROUND ENAMEL DECORATED SAUCER DISHES, GUANGXU MARK AND PERIOD, D: 18.2 CM.
光緒 藍釉琺瑯彩瓜果紋盤一對

HK\$40,000-60,000



93

A SET OF FAMILLE-ROSE OF THREE STARGODS, 19TH CENTURY, H: 61 CM.
十九世紀 茂生記造 粉彩三星一套

HK\$30,000-40,000



94

A FAMILLE-ROSE VASE BY WANG PINGSUN, FINELY DECORATED WITH LANDSCAPE, H: 29 CM.

汪平孫 粉彩山水紋瓶

HK\$3,000-7,000



95

A FAMILLE-ROSE PLAQUE WITH WOODEN FRAME BY CHENG YAN, FINELY DECORATED WITH LANDSCAPE, 23.5 X 36 CM.

程言 淺降彩繪山水瓷掛屏

HK\$20,000-30,000

程言：字次笠，淺絳彩大家程門的長子。晚清民國淺絳彩名家。安徽黟縣人，擅畫淺絳山水。其畫山水瀟灑出塵，極盡勾勒渲染之妙。



96

A FAMILLE-ROSE EGG SHELL VASE, QIANLONG MARK, FINELY DECORATED WITH LANDSCAPE AND FIGURES, H: 46.5 CM.

乾隆年製 粉彩薄胎雪景人物瓶

HK\$1,000-3,000



97

A FAMILLE-ROSE BOWL, DAOGUANG MARK, FINELY DECORATED WITH PEONIES AND INSCRIPTIONS, 17 X 6.5 CM.

道光款 粉彩牡丹題詩碗

HK\$3,000-4,000



98

A FAMILLE-ROSE PLAQUE BY JIN PINXING, EACH FINELY DECORATED WITH FLOWERS AND BIRDS, 25 X 37.5 CM.

金品卿 淺降彩花鳥紋掛屏

HK\$250,000-300,000

金品卿：誥，號寒峰山人。齋號環翠亭。安徽省黟縣人，活躍于清同治元年至光緒三十四年間（1862-1908年），供職景德鎮禦窯廠，是光緒初年淺絳彩繪名家，景德鎮文人派畫瓷先驅之一。他擅長淺絳山水、花鳥和人物畫。



99

A FAMILLE-ROSE CHARGER, REPUBLIC OF CHINA, BY WANG YUNQUAN, DATED 1926, FINELY DECORATED WITH LANDSCAPE AND CALLIGRAPHY, D: 30.5 CM.

民國 王雲泉 山水人物大盤

HK\$10,000-20,000

王雲泉：名清，字雲泉，號含穀，原籍江西省樂平市。師從石奇峰，後得陶業學校老師張志湯、方雲峰指導，受益匪淺，3年後學校畢業又先後拜汪大滄、汪野亭為師，把多種陶瓷山水和國畫山水技法融會貫通，技藝逐精，為建國後創新“王氏山水”打下堅實的基礎。其山水瓷畫作品，純粹繼承了景德鎮傳統粉彩山水瓷工藝，用筆設色一脈相承。



100

A FAMILLE-ROSE CONTAINER AND COVER, TONGZHI MARK AND PERIOD, 22.5 X 25.5 CM.

同治 粉彩人物蓋罐

HK\$8,000-10,000



101

A FAMILLE-ROSE HEXAGONAL FLOWER POT BY YU HUANWEN, FINELY DECORATED WITH MAIDEN AND GARDEN SCENE, 23 X 20 CM.

民國 余煥文 淺絳彩六角粉彩仕女紋花盆

HK\$8,000-10,000



102

A FAMILLE-ROSE EGG SHELL DISH BY WANG YUNQUAN, FINELY DECORATED WITH LANDSCAPE AND FIGURES, D: 24.5 CM.

新華瓷廠美研室 王雲泉 粉彩山水人物薄胎盤

HK\$10,000-20,000



103

A PAIR OF FAMILLE-ROSE BOWLS, XUANTONG MARK AND PERIOD, EACH FINELY DECORATED WITH FLOWERS AND BIRDS, 16 X 7.5 CM.

宣統 粉彩花鳥紋碗一對

HK\$40,000-60,000



104

A PAIR OF FAMILLE-ROSE OVIFORM VASES, 19TH CENTURY, H: 31 CM. Painted with numerous magpies in blossoming prunus trees above bamboo and Lingzhi fungus at the foot, the lotus leaf covers with prunus blossoms.

十九世紀 粉彩喜鵲登梅瓶一對

HK\$70,000-90,000



105

A WOODEN TABLE SCREEN SET WITH A FAMILLE-ROSE PLAQUE BY HE XUREN, FINELY DECORATED WITH LANDSCAPE, 25.4 X 17.5 CM.
何許人 粉彩山水插屏

HK\$50,000-70,000



106

AN IRON-RED-DECORATED "DRAGON" DISH, XIANFENG MARK AND PERIOD, THE STEEPS SIDES EACH ENAMELLED WITH TWO STRIDING DRAGONS, THE INTERIOR WITH A SCALY DRAGON AND CLOUDS, 21.5 X 5 CM.
咸豐 礬紅龍紋盤

HK\$70,000-90,000

大清咸豐年製



107

107

A MASSIVE INCISED LONGQUAN CELADON BARBED DISH, YUAN DYNASTY, D: 44 CM.

Heavily potted, the shallow flared sides molded in the interior as petals rising to the correspondingly petal-barbed, everted rim with raised outer edge, overall covered with a glaze of sea-green tone thinning to a lighter tone on the raised areas and continuing over the tapered foot to cover all but an unglazed ring on the base burnt orange in the firing.

元 龍泉釉刻花稜角大盤

HK\$210,000-310,000



108

108

A VERY FINE AND RARE CELADON VASE, 18TH CENTURY, OF COMPRESSED PEAR-SHAPED THE GENEROUSLY ROUND BODY, FINELY CARVED WITH FLOWERS AND BIRDS, H: 20 CM.

十八世紀 粉青釉反白紋飛鳴宿食紋水乘

HK\$35,000-45,000



109

A FAMILLE-ROSE PLAQUE BY WANG YETING WITH FRAME, FINELY DECORATED WITH LANDSCAPE, 29 X 42 CM.

汪野亭 洋彩山水瓷板掛屏

HK\$80,000-100,000



110

A FAMILLE-ROSE TABLE SCREEN, REPUBLIC OF CHINA, 24.5 X 37 CM.

民國 粉彩人物掛屏

HK\$20,000-30,000



111
A GE-TYPE GLAZED BRUSHPOT, 19TH CENTURY,
6.3 X 9 CM.
十九世紀 仿哥釉筆筒

HK\$2,000-3,000



112
A CELADON GLAZED MEIPING, 19TH CENTURY,
H: 17 CM.
十九世紀 豆青釉梅瓶

HK\$4,000-6,000



113
A GROUP OF FAMILLE-ROSE DISHES DECORATED WITH FISHES AND
PRAWNS, A SET OF FOUR SILVER PLATED DRAGON TRAYS WITH GLASS
BOWLS, 11.5 X 5 CM.
粉彩魚蝦紋盤四個及鍍銀紋龍紋盤四個

HK\$2,500-3,500



114
A WUCAI VASE, KANGXI PERIOD, FINELY DECORATED
WITH FIGURES, H: 19.5 CM.
康熙 五彩人物瓶

HK\$30,000-50,000



115
A WUCAI BRUSHPOT, KANGXI PERIOD, FINELY
DECORATED WITH FLOWERS AND BIRDS,
10.3 X 14 CM.
康熙 五彩開光花鳥紋筆筒

HK\$6,000-8,000



116
A FAMILLE-ROSE VASE, YONGZHENG PERIOD, FINELY
DECORATED WITH MAIDEN, H: 38 CM.
雍正 粉彩仕女博古紋瓶

HK\$8,000-12,000



117
A COPPER RED GLAZED VASE, QIANLONG PERIOD,
H: 20 CM.
乾隆 年紅釉膽瓶

HK\$15,000-20,000



118

A SET OF SIX PIECES FAMILLE-ROSE TEA SERVICES INCLUDING A TEA POT, FOUR TEA BOWLS AND TRAY,

Dish: D: 25 CM, Cup: 10.5 X 5.5 CM, □: 20 X 15 CM.

《九江雷德茂製》 鄒文侯 粉彩花鳥紋茶壺茶杯一套連托六件

HK\$6,000-15,000



119

A GRISALLE DECORATED BRUSHPOT, H: 14 CM.

《屯溪賈振泰出品》 秋山行旅墨彩山水人物筆筒

HK\$5,000-10,000



120

A FAMILLE-ROSE FLOWER POT, REPUBLIC OF CHINA, 20 X 19.5 X 9.5 CM.

民國 淺降彩山水花鳥博古紋方花盆

HK\$8,000-15,000



121

A SET OF FOUR FAMILLE-ROSE PLAQUES WITH FRAME, EACH FINELY DECORATED WITH FOUR SEASONS OF FLOWERS AND BIRDS, 21 X 74 CM.

寧發有 粉彩四季花鳥掛屏一套四件

HK\$10,000-20,000



122
A FAMILLE-ROSE VASE BY HUANG XIAOCHUN, FINELY DECORATED WITH FLOWERS AND BIRDS, H: 14 CM.
黃曉村 秋色清華粉彩花鳥紋瓶

HK\$1,000-3,000



123
A FAMILLE-ROSE VASE, HONGXIAN MARK, FINELY DECORATED WITH TWO IMMORTALS, H: 20 CM.
洪憲年製 粉彩和合二仙瓶

HK\$2,500-5,000



124
A FAMILLE-ROSE BRUSHPOT BY XIONG MENGTING, FINELY DECORATED WITH FLOWERS AND BIRDS, 9.5 X 11.5 CM.
熊夢亭 粉彩花鳥筆筒

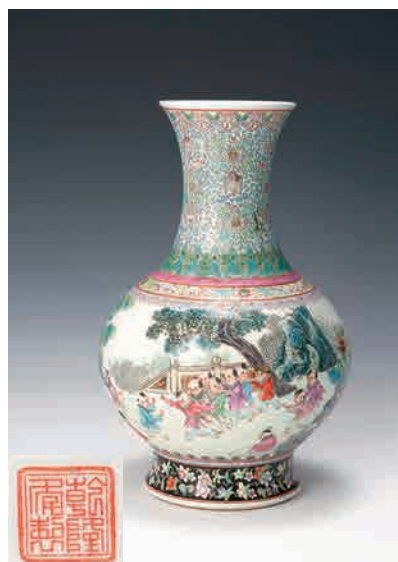
HK\$1,000-2,000

熊夢亭：熊夢麟又名夢亭，是江西南昌人，民國至解放初粉彩畫名家，是景德鎮著名繪瓷高手，擅長釉上粉彩花鳥瓷畫。作品用筆細膩，構圖簡練，格調高雅，被譽稱為“小八友”。



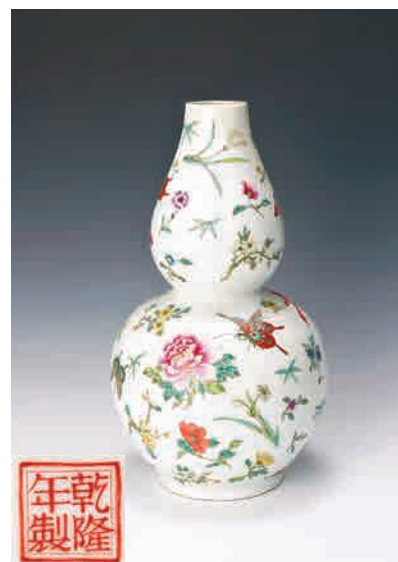
125
A BLUE AND WHITE FAMILLE-ROSE VASE, QIANLONG MARK, FINELY DECORATED WITH WARRIORS AND LANDSCAPE, H: 33 CM.
乾隆款 青花加彩戰將人物瓶

HK\$6,000-8,000



126
A FAMILLE-ROSE VASE, QIANLONG MARK, CIRCA 1970', FINELY DECORATED WITH HUNDRED CHILDREN, H: 32.5 CM.
七十年代 乾隆款 粉彩百子圖瓶

HK\$1,000-2,000



127
A FAMILLE-ROSE DOUBLE GOURD VASE, QIANLONG MARK, H: 35 CM.
乾隆款 粉彩花蝶紋大吉瓶

HK\$3,000-4,000



128
A FAMILLE-ROSE PLAQUE WITH WOODEN HANGING
FRAME, REPUBLIC OF CHINA, 23 X 36.5 CM.
民國 淺降彩鶴紋鹿同春掛屏

HK\$10,000-20,000



129
A PAIR OF FAMILLE-ROSE PLAQUE WITH FRAME,
EACH FINELY DECORATED WITH CHILDREN AT PLAY,
21 X 74 CM.
粉彩童子耍樂紋掛屏一對

HK\$10,000-20,000



130
A GINSALLE DECORATED PLAQUE, FINELY DECORATED
WITH PAWNS, 23 X 23 CM.
墨彩蝦紋瓷片

HK\$20,000-30,000



131
A FAMILLE-ROSE PLAQUE BY YU LIWEN WITH FRAME,
FINELY DECORATED WITH TIGER, 27 X 41.5 CM.
余隸文 粉彩虎紋掛屏

HK\$10,000-20,000

余隸文，民國時期瓷器彩繪名家。

132
A PAIR OF FAMILLE-ROSE VASES BY WAN RENBAO,
EACH FINELY DECORATED WITH FLOWERS AND
BIRDS, H: 29 CM.
萬仁保 粉彩鳥題詩瓶一對

HK\$2,000-3,000

133
A SET OF FOUR FAMILLE-ROSE PLAQUE WITH
WOODEN FRAME, 22 X 29.5 CM.
八十年代出口 乾隆款 粉彩花鳥掛屏一套四張

HK\$6,000-8,000





134

A BLUE AND WHITE FLOWER POT, YONGZHENG PERIOD, FINELY DECORATED WITH BATS AND CLOUD, H: 17 CM.

雍正 青花雲蝠紋花盆

HK\$24,000-30,000



135

A BLUE AND WHITE BRUSHPOT, 18TH CENTURY, FINELY DECORATED WITH THREE STARGODS AND DIGNITY, 24 X 20 CM.

十八世紀 青花福祿壽孝大筆筒

HK\$48,000-58,000



136

A FAMILLE-ROSE SQUARE BRUSHPOT, QING DYNASTY, PERIOD, FINELY DECORATED ON THE SIDE WITH LANDSCAPE AND FIGURES, H: 28 CM.

清 粉彩人物紋筒

HK\$42,000-52,000



137
A FAMILLE-ROSE VASE BY ZHAO HUIMIN, FINELY DECORATED WITH MUSHROOM LADY AND DEER, H: 23.5 CM.
景德鎮藝術瓷廠美研室 趙惠民
粉彩麻姑獻壽紋薄胎瓶

HK\$5,000-8,000



138
A FAMILLE-ROSE VASE, QIANLONG MARK, FINELY DECORATED WITH MOTHER AND CHILDREN, H: 23.5 CM.
乾隆年款 粉彩母與子紋瓶

HK\$2,000-4,000



139
A FAMILLE-ROSE EGG SHELL VASE BY WANG YIJUN, FINELY DECORATED WITH PEACOCK AND PLUM BLOSSOM, H: 30 CM.
汪以俊 景德鎮藝術瓷廠美研室
粉彩孔雀花卉題詩薄胎瓶

HK\$4,000-6,000

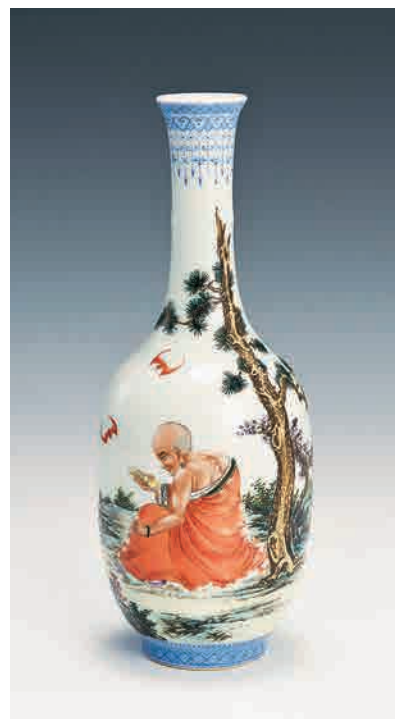


140
A FAMILLE-ROSE BOWL BY MEI XIAOTIAN, FINELY DECORATED WITH LANDSCAPE AND FIGURES, 15 X 6.5 CM.
慎德堂製 梅曉天 伯牙撫琴人物
外九老星人物題詩碗

HK\$10,000-20,000

141
A FAMILLE-ROSE VASE BY LIU XIREN, FINELY DECORATED WITH LUOHAN UNDER PINE TREE, H: 21 CM.
劉希任 粉彩樹下羅漢瓶

HK\$2,000-5,000



141



142
A CELADON GLAZED VASE, QIANLONG MARK, FINELY
DECORATED WITH LOTUS SCROLL, H: 52 CM.
乾隆款 豆青釉纏枝蓮如意洗口瓶

HK\$1,000-4,000



143
AN UNDERGLAZED BLUE AND COPPER RED
DECORATED VASE, 19TH CENTURY, FINELY
DECORATED WITH LANDSCAPE AND FIGURES,
H: 56 CM.
十九世紀 青花釉裡紅山水人物瓶

HK\$40,000-50,000



144
A FAMILLE-ROSE PLAQUE
BY ZHOU GUOJUN,
31 X 21.5 CM.
鄒國鈞 粉彩掛屏

HK\$20,000-30,000



145
A PAIR OF FAMILLE-ROSE VASES, 19TH CENTURY,
EACH FINELY DECORATED WITH MOTHER AND
CHILDREN, H: 24 CM.
十九世紀 粉彩母與子紋六角瓶一對

HK\$5,000-7,000



146
A PAIR OF FAMILLE-ROSE VASES, 19TH CENTURY,
EACH FINELY DECORATED WITH LANDSCAPE AND
FIGURES, H: 24.5 CM.
十九世紀 粉彩山水人物瓶一對

HK\$1,000-4,000



147
A PAIR OF FAMILLE-ROSE HEAD STANDS, REPUBLIC
OF CHINA, H: 29 CM.
民國 粉彩人物帽筒一對

HK\$4,500-6,500



148
A FAMILLE-ROSE BASIN WITH COVER, TONGZHI MARK
AND PERIOD, FINELY DECORATED WITH FLOWERS
AND BIRDS, H: 14.5 CM.
同治年製 粉彩花鳥紋蓋盅

HK\$1,000-4,000

**149**

A SET OF FOUR FAMILLE-ROSE PLAQUES WITH WOODEN FRAMES, JIANG XI CI YE GONG SI MARK, EACH FINELY DECORATED WITH LANDSCAPE, 20.5 X 78.5 CM.

《江西瓷業公司》粉彩山水掛屏一套四件

HK\$40,000-60,000



150
A FAMILLE-ROSE TEA POT AND COVER BY FANG BOXIANG, FINELY DECORATED WITH ROOSTERS AND INSCRIPTIONS, 16 X 7.5 CM.
方伯鄉 雞圖紋茶壺

HK\$1,000-3,000



151
A DOUCAI TEA POT AND COVER, YONGZHENG MARK, FINELY DECORATED WITH PHOENIX AND PEONY, H: 14 CM.
雍正款 斗彩鳳紋牡丹紋蓋壺

HK\$6,000-8,000



152
A BLUE AND WHITE CUP, KANGXI MARK, 6.2 X 5 CM.
康熙款 青花花神杯

HK\$500-1,000



153
A FAMILLE-ROSE TEA POT AND COVER WITH PLATES BY WEI YONGSHENG, FINELY DECORATED WITH AN OLD MAN AND FISHERMAN, 11 X 10 CM.
魏壩生 粉彩人物蓋連托

HK\$1,000-3,000

魏壩生：又名魏榮生，生卒不詳。1956 年在景德鎮陶瓷工藝社供職。他曾師從王琦，擅畫粉彩人物。後在景德鎮陶瓷工藝美術技藝學校，擔任粉彩課的教學工作。以繪製粉彩古裝人物畫為主，兼攻填色、洗染。1956 年前後調景德鎮陶瓷學院任教，為陶瓷藝術事業作出了重要貢獻。



154
A FAMILLE-ROSE VASE, 19TH
CENTURY, FINELY DECORATED
WITH FLOWERS AND BIRDS,
H: 45 CM.
十九世紀 粉彩花鳥紋瓶

HK\$1,000-4,000



155
A COPPER RED GLAZED VASE,
QIANLONG MARK, H: 48 CM.
乾隆款 窯變釉雙貫耳六角瓶

HK\$2,000-5,000



156
A BLUE AND WHITE VASE, 19TH
CENTURY, FINELY DECORATED
WITH LANDSCAPE AND BIRDS,
H: 44 CM.
十九世紀 青花山水雀鹿紋瓶

HK\$2,000-5,000



157
A COPPER RED GLAZED VASE,
QIANLONG MARK, H: 33 CM.
乾隆款 紅釉雙耳瓶

HK\$2,000-5,000



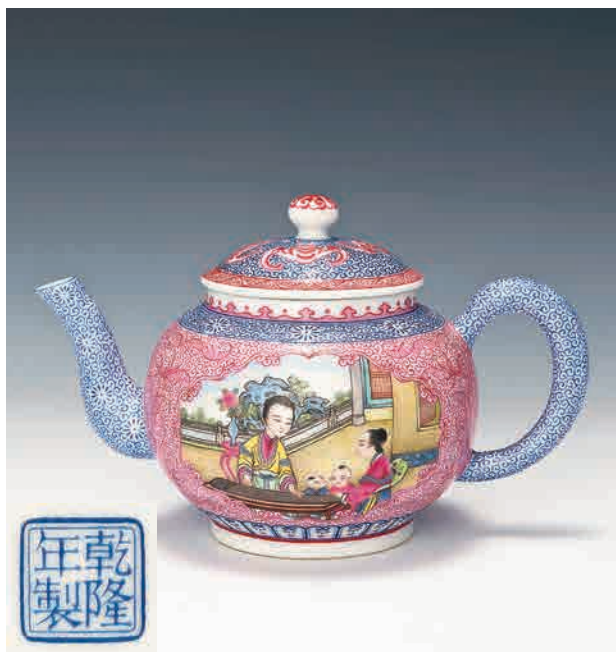
158
AN UNDERGLAZED COPPER RED
DOUBLE GOURD VASE, QIANLONG
MARK, FINELY DECORATED WITH
LOTUS SCROLL, H: 34 CM.
乾隆款 釉裡紅纏枝蓮大吉瓶

HK\$2,000-5,000



159
A FAMILLE-ROSE VASE, FINELY
DECORATED WITH DRAGON AND
PHOENIX, H: 26 CM.
粉彩龍鳳紋瓶

HK\$2,000-5,000



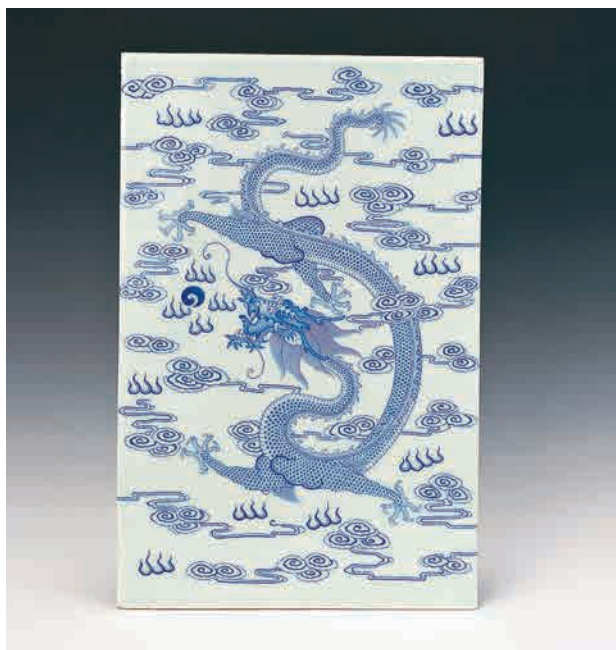
160
AN ENAMELLED DECORATED VASE WITH COVER,
QIANLONG MARK, FINELY DECORATED WITH MOTHER
AND CHILD, 20 X 12 CM.
乾隆年製款 琺瑯彩母與子蓋壺

HK\$4,000-7,000



161
AN ENAMEL DECORATED VASE, QIANLONG MARK,
FINELY DECORATED WITH FLOWERS, H: 18.5 CM.
乾隆年製 藍琺瑯彩地粉彩開光花卉紋瓶

HK\$7,000-10,000



162
A BLUE ENAMEL DECORATED "DRAGON" PLAQUE,
39 X 25 CM.
琺瑯彩雲龍紋瓷板

HK\$2,500-5,000



163
A PINK ENAMEL DECORATED BALL VASE, H: 17.5 CM.
胭脂紅山水人物天球瓶

HK\$3,000-4,000



164

A SET OF FOUR FAMILLE-ROSE PLAQUES BY NING FAYOU WITH WOODEN FRAMES, EACH FINELY DECORATED WITH GOLDFISHES AND SEAWEED, 24 X 35 CM.

寧發有 粉彩四季魚藻紋掛屏一套四件

HK\$20,000-30,000

寧發有 (1978-)：字“遠”，別署“遊山樵子”。江西浮梁人。江西省高級陶瓷美術師。1996年畢業於江西工藝美術學院，同年師從粉彩瓷畫名家汪家旺先生研習陶瓷繪畫，主攻粉彩花鳥、魚藻兼習書法、金石。後又得國畫老藝人譚堯卿先生悉心指點，作品工寫兼備，色彩清新，明快雅致，構圖新穎，謀篇佈局，講究章法，開合有度，追求意境。



165

A FAMILLE-ROSE TEA CUP WITH COVER BY WANG GUIYING, FINELY DECORATED WITH LANDSCAPE, H: 13 CM.

景德鎮製 汪桂英 粉彩山水人物紋蓋杯 (50 至 70 年代高白釉手工胎)

HK\$2,000-4,000

汪桂英：江西樂平人，自幼隨父汪野亭（近代景德鎮陶瓷粉彩山水畫名家，“珠山八友”之一）學習陶瓷藝術，擅長陶瓷器型設計、高溫色釉綜合裝飾，兼長中國畫。她的粉彩山水瓷畫，既得其父遺韻，又借鑒西畫技法，構圖簡潔明瞭，意境寧靜高遠；色釉綜合裝飾韻生動，形意自然。



166

AN UNDERGLAZED FAMILLE-ROSE VASE, FINELY DECORATED WITH A LADY AND GARDEN SCENE, H: 36 CM.

輕工部陶瓷研究所 釉中彩仕女弄琴瓶

HK\$4,000-8,000



167

A PAIR OF UNDERGLAZED FAMILLE-ROSE VASES, EACH FINELY DECORATED WITH A MAIDEN IN A GARDEN SCENE, H: 38 CM.

輕工部陶瓷研究所 釉中彩山水人物瓶

HK\$4,000-8,000



168

A FAMILLE-ROSE TEA CUP WITH COVER BY WANG LONG FU, FINELY DECORATED WITH FLOWERS AND CALLIGRAPHY, H: 12 CM.

王隆夫 粉彩紫雪香林蓋杯 (50 至 70 年代高白釉手工胎)

HK\$2,000-4,000

王隆夫：江西浮梁縣人，1931 年 11 月生。高級工藝美術師、景德書院院長、第八屆全國政協委員，中國美術家協會會員。1995 年授予“工藝美術大師”稱號。出身于“陶瓷世家”，祖父王昌彬，曾任晚清 - 禦窯總辦。



169

A FAMILLE-ROSE EGG SHELL VASE BY DENG YOUTANG, FINELY DECORATED WITH LANDSCAPE AND FIGURES, H: 37.5 CM.

景德鎮製 鄧幼堂 粉彩薄胎山水人物瓶

HK\$20,000-40,000

鄧幼堂 (1959-)：江西新建人，江西省工藝美術大師。從小受到父親鄧必浩（已故陶瓷美術名家）的薰陶，1984 年畢業于景德鎮陶瓷職工大學美術系。



170

A FAMILLE-ROSE VASE BY ZHANG SONGTAO, FINELY DECORATED WITH WILLOW AND SWALLOWS AND INSCRIPTIONS, H: 16 CM.

張松濤 粉彩柳燕紋瓶

HK\$6,000-8,000

張松濤 (1926-1994)：江西波陽人。1944 年畢業于江西浮梁陶瓷職業學校。景德鎮市陶瓷美術家，高級工藝美術師。早年師從劉雨岑。



171

A FAMILLE-ROSE VASE EGG SHELL VASE, ZHONG GUO JING DE ZHEN ZHI, FINELY DECORATED WITH MAIDEN AND GARDEN SCENE, H: 15 CM.

中國景德鎮製 粉彩人物薄胎瓶

HK\$8,000-15,000



172
A FAMILLE-ROSE TEA CUP AND COVER BY WANG ENHUI, FINELY DECORATED WITH FLOWERS AND BIRDS, H: 13 CM.

1973 年代 王恩懷 中國景德鎮製 粉彩花鳥紋蓋杯 (50 至 70 年代高白釉手工胎)

HK\$2,000-4,000



173
A FAMILLE-ROSE VASE BY WANG YIJUN, FINELY DECORATED WITH PEACOCK AND PLUM BLOSSOM, H: 23.5 CM.

景德鎮藝瓷廠美術研室 汪以俊
粉彩梅花孔雀紋橄欖瓶

HK\$5,000-8,000



174
A FAMILLE-ROSE VASE, QIANLONG MARK, FINELY DECORATED WITH PINE TREE AND CRANE, H: 43 CM.

乾隆年製 粉彩松鶴紋瓶

HK\$1,000-3,000



175
A FAMILLE-ROSE VASE, QIANLONG MARK, FINELY DECORATED WITH LANDSCAPE AND FIGURES, H: 43 CM.

乾隆御覽之寶 山水人物瓶

HK\$1,000-3,000



176
A FAMILLE-ROSE PLAQUE, 24.5 X
36.5 CM.
粉彩六合同春瓷片

HK\$10,000-20,000



177
A FAMILLE-ROSE PLAQUE WITH
WOODEN HANGING FRAME, FINELY
DECORATED WITH STARGODS, 26.5
X 40 CM.
粉彩吉星高照瓷片

HK\$2,000-3,000



178
A FAMILLE-ROSE PLAQUE,
FINELY DECORATED WITH WINTER
LANDSCAPE, 22 X 30.5 CM.
粉彩雪景瓷片

HK\$500-800



179
A FAMILLE-ROSE PLAQUE BY LI XIANGDONG, FINELY
DECORATED WITH TWO DOGS AND GARDEN SCENE,
36 X 25 CM.
李祥東 雙福吉祥圖瓷片

HK\$1,500-4,000



180
A FAMILLE-ROSE PLAQUE BY WANG DACANG, FINELY
DECORATED WITH LANDSCAPE AND INSCRIPTIONS,
25.5 X 17.5 CM.
江西建國瓷業公司 汪大倉 粉彩山水人物瓷板

HK\$8,000-15,000

李祥東 (1963-)：生於江西宜春，中國工藝美術協會會員，高級工藝美術師，中國書畫家協會理事，中國收藏家喜愛的陶瓷精英，景德鎮美術館人物畫館副館長，景德鎮市美協會員。



181
AN UNDERGLAZED FAMILLE-ROSE TEA CUP AND COVER, YI SHU CI CHANG MEI YAN SHI MARK, FINELY DECORATED WITH WORKERS AND SOLDIERS, H: 17 CM.
藝術瓷廠美研室 為人民服務釉下粉彩人物茶壺

HK\$8,000-10,000



182
A FAMILLE-ROSE DISH, JING DE ZHEN MARK, FINELY DECORATED WITH A FAIRY, D: 18 CM.
景德鎮 仙女散花粉彩人物盤

HK\$500-1,000



183
A FAMILLE-ROSE GARLIC MOUTH VASE, QIANLONG MARK, H: 17.5 CM.
乾隆款 粉彩花卉紋蒜口瓶

HK\$6,000-8,000



184
AN UNDERGLAZED BLUE AND RED DECORATED FLOWER POT BY FU YAOSHENG, FINELY DECORATED WITH FLOWERS AND BIRDS, D: 28.5 CM.
傅堯笙 青花釉裡紅花鳥紋大盤連托

HK\$10,000-20,000

傅堯笙 (1936-2003)：江西臨川人，中國陶瓷美術大師，中國畫家，中函藝聯名譽會長，陶瓷美術家、高級工藝美術師、號青花樓主。



185
A FAMILLE-ROSE BOWL, YONGZHENG MARK, FINELY
DECORATED WITH FLOWERS AND INSECTS, H: 7.5 CM.
雍正款 粉彩花卉蟲草紋碗

HK\$1,500-4,000



186
A FAMILLE-ROSE BOWL, QIANLONG MARK, FINELY
DECORATED WITH FLOWERS AND FRUITS, 26 X 10 CM.
乾隆款 粉彩花卉紋大碗

HK\$8,000-10,000



187
A WUCAI TRIPOD CENSER, WANLI MARK, FINELY
DECORATED WITH THE LOTUS SCROLLS, 35 X 15.5 CM.
萬曆款 青花五彩纏枝蓮紋雙耳爐

HK\$4,000-6,000



188
A FAMILLE-ROSE DISH, GUANGXU MARK, FINELY
DECORATED WITH THE BUDDHIST EIGHT EMBLEMS,
D: 34 CM.
光緒款 粉彩八吉祥紋大盤

HK\$4,000-6,000



189
A FAMILLE-ROSE VASE BY WANG XIAOTING, FINELY
DECORATED WITH LANDSCAPE AND FIGURES, H: 12 CM.
汪小亭 山水人物連景瓶

HK\$10,000-30,000



190
A FAMILLE-ROSE TABLE SCREEN, REPUBLIC OF
CHINA, 24 X 16.5 CM.
民國 塔影參天 粉彩插屏

HK\$10,000-20,000



191
A FAMILLE-ROSE TEA CUP AND COVER BY WANG ENHUI, FINELY DECORATED WITH FLOWERS
AND BIRDS, H: 14 CM.

王恩懷 粉彩花鳥紋蓋杯 (50 至 70 年代高白釉手工胎)

HK\$2,000-4,000

王恩懷 (1935-)：出生於景德鎮。中國工藝美術大師，原籍江西省豐城市長湖鄉。從小隨父親王步學藝作畫，後又師從劉雨岑先生研習繪瓷技藝。1954 年就職於輕工部陶研所（現中國輕工業陶瓷研究所），從事陶瓷美術創作設計，1964 年奉調景德鎮為民瓷廠，景德鎮紫蓮花網路有限公司大瓷網藝術家庫陶瓷名家、任廠美研所名譽所長。1979 年被授予景德鎮“陶瓷美術家”稱號。1993 年被授予“中國工藝美術大師”稱號。



192



193



194

192
A PAIR OF FAMILLE-ROSE HEAD STANDS, 19TH CENTURY, H: 29 CM.
十九世紀 粉彩福祿壽帽筒一對

HK\$4,500-6,500

193
A PAIR OF RUBY RED GROUND FAMILLE-ROSE HEAD STANDS, REPUBLIC OF CHINA, EACH FINELY PAINTED WITH A PANEL OF FIGURES AND A PANEL OF PINE AND CRANE, 12 X 28 CM.
民國 胭脂紅開光松鶴紋陶淵明賞菊帽筒一對

HK\$14,000-18,000



195

194
A CANTON ENAMEL FOOD WARMER WITH COVER, FINELY DECORATED WITH FIGURES, 30 X 12 CM.
廣彩人物暖盤連蓋

HK\$1,000-4,000

195
A PAIR OF BLUE AND WHITE BOWLS, 16TH CENTURY, FINELY DECORATED WITH LOTUS SCROLL AND TIBETAN INSCRIPTIONS, H: 17 CM.
晚明 青花纏枝蓮紋碗一對

HK\$2,000-4,000



196
AN UNDERGLAZED COPPER RED YUHUCHUN PING,
FINELY DECORATED WITH LOTUS SCROLLS, H: 31 CM.
釉裡紅纏枝蓮紋玉壺春瓶

HK\$20,000-30,000



197
A FLAMBE GLAZED CENSER, YONGZHENG PERIOD,
22 X 12 CM.
雍正 紅均釉雙獅耳爐

HK\$13,000-18,000



198
A PAIR OF MLE FLEUR DISHERS, GUANGXU MARK AND PERIOD, D: 14 CM.
光緒 粉彩萬花紋盤一對

HK\$14,000-18,000



199
A FAMILLE-ROSE TEA BOWL AND COVER, DAOGUANG MARK, FINELY DECORATED WITH FLOWERS AND BUTTERFLIES, 11 X 8.5 CM.
道光款 粉彩過牆花蝶紋蓋碗

HK\$8,000-10,000



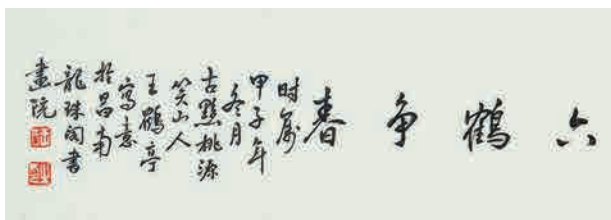
200
A BLUE AND WHITE EWER, QIANLONG MARK, FINELY DECORATED WITH FUNGUS SCROLLS AND EIGHT BUDDHIST EMBLEMS, 25 X 17.5 CM.
乾隆款 青花八吉祥紋酒壺

HK\$6,000-8,000



201
A FAMILLE-ROSE PLAQUE BY WANG HETING, FINELY DECORATED WITH PLUM BLOSSOM, 55 X 110 CM.
王鶴亭 粉彩梅花紋瓷片掛屏

HK\$4,000-7,000

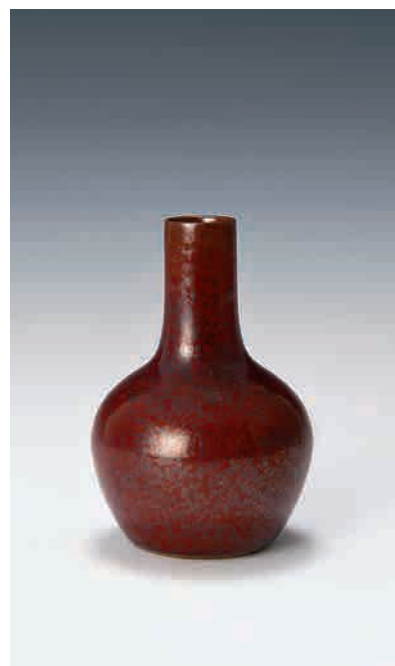




202
A WUCAI CUP, QING DYNASTY,
FINELY DECORATED WITH
SHOULOU AND DEER, H: 10.7 CM.
清 五彩人物金鐘杯
HK\$4,000-6,000



203
A GE-TYPE GLAZED TRIPOD
CENSER, 13 X 13 CM.
仿哥釉三足爐
HK\$2,000-5,000



204
A BROWISH GLAZED BOTTLE
VASE, H: 12 CM.
鐵金秀釉天球瓶
HK\$500-700



205
A YELLOW GROUND FAMILLE-ROSE
BEAKER VASE, QIANLONG MARK, H:
22 CM.
乾隆款 黃地粉彩花觚
HK\$8,000-10,000



206
A BLUE AND WHITE JAR AND
COVER, 19TH CENTURY, FINELY
DECORATED WITH FU LIONS, H: 54 CM.
十九世紀 青花獅子滾球蓋壺
HK\$10,000-20,000



207
A TURQUOISE GROUND FAMILLE-
ROSE VASE, 19TH CENTURY,
FINELY DECORATED WITH
FLOWERS AND BIRDS, H: 42 CM.
十九世紀 松綠地花鳥紋瓶
HK\$14,000-18,000



208
A FAMILLE-ROSE VASE, QIANLONG
MARK, FINELY DECORATED WITH
MOTHER AND CHILD, H: 22.5 CM.
乾隆款 粉彩西洋少婦瓶
HK\$4,000-8,000



209
A FAMILLE-ROSE BEAKER VASE,
FINELY DECORATED WITH
FLOWERS AND BIRDS, H: 46 CM.
粉彩花鳥紋芭蕉瓶
HK\$1,000-4,000



210
A ROLIN'S EGG GLAZE YIXING
VASE, H: 27 CM.
宜興爐均釉方瓶
HK\$3,000-4,000



211
A PINK GROUND WHITE
DECORATED VASE, JING DE ZHEN
ZHI, FINELY DECORATED WITH
FLOWERS AND BIRDS, H: 42 CM.
景德鎮製 胭脂紋地反白紋花鳥紋瓶
HK\$8,000-10,000



212
A FAMILLE-ROSE VASE,
YONGZHENG MARK, FINELY
DECORATED WITH FLOWERS AND
INSCRIPTIONS, H: 15.5 CM.
雍正款 粉彩花卉題詩膽瓶
HK\$8,000-10,000



213
A FAMILLE-ROSE VASE, REPUBLIC
OF CHINA, H: 43 CM.
民國 粉彩人物瓶
HK\$3,000-5,000



214

A FAMILLE-ROSE TEA CUP WITH COVER BY HUANG MAIJIU, FINELY DECORATED WITH PLUM BLOSSOM AND GOLDFISHES, H: 14.5 CM.

黃賣九 中國景德鎮 粉彩梅花紋內釉下彩雙金魚紋蓋杯 (50 至 70 年代高白釉手工胎)

HK\$2,000-4,000

黃賣九：江西都昌人，1938 年 9 月生。景德鎮高等專科學校藝術系副教授，中國工藝美術大師，中國工藝美術學會會員，江西省美術家協會會員，景德鎮市美術家協會副主席，大瓷網藝術家庫陶瓷名家，擅長中國書法，陶瓷青花裝飾。



215

A LARGE GILT-DECORATED COBALT BLUE VASE, FINELY PAINTED WITH A CONTINUOUS SCENE OF LANDSCAPE AND FIGURES, H: 37.5 CM.

十八世紀 藍地描金山水博古紋瓶

HK\$42,000-52,000



216

A GILT DECORATED VASE, 17TH CENTURY, FINELY DECORATED WITH DRAGON, H: 28.5 CM.

十七世紀 珊瑚紅描金龍紋瓶

HK\$12,000-16,000



217

A CARVED GE-TYPE GLAZED "DRAGON" DISH, CHENGHUA MARK, 18TH CENTURY, 36.5 X 7 CM.

十八世紀 成化款 凸瓷雲龍大盤

HK\$70,000-90,000



218

A PAIR OF CARVED CELADON GLAZED FLOWER POTS AND STANDS, QIANLONG MARK AND PERIOD, EACH FINELY INCISED WITH STYLISED DRAGON, H: 17 CM.

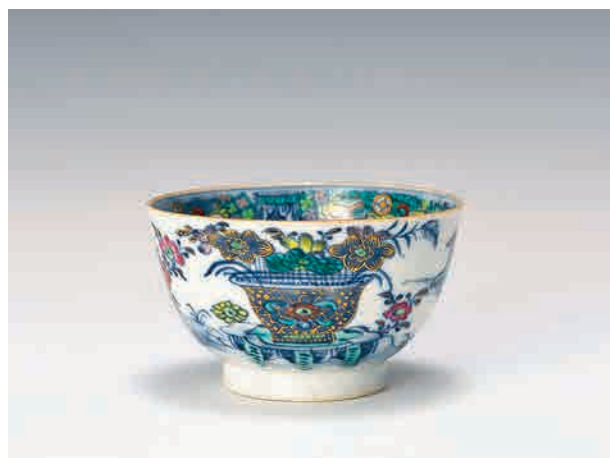
乾隆 豆青釉博古龍紋花盆連托一對

HK\$110,000-160,000



219
A GRISAILLE TEA POT BY WU XIANGYAN, FINELY
DECORATED WITH INSCRIPTIONS AND SEAL, 17 X 6.5 CM.
吳香岩 墨彩題詩茶壺

HK\$1,000-3,000



220
A DOUCAI BOWL, 8.5 X 5 CM.
《澄懷園製》斗彩描金山水博古紋碗

HK\$500-700



221
A FAMILLE-ROSE TEA POT BY ZHOU GUOJUN, FINELY
DECORATED WITH LANDSCAPE AND INSCRIPTIONS, 17
X 7 CM.
鄒國鈞 粉彩山水紋茶壺

HK\$1,000-3,000



222
A PAIR OF FAMILLE-ROSE DISHES, JIANGXI PORCELAIN
FACTORY SEALMARK, REPUBLIC OF CHINA, EACH
FINELY PAINTED WITH FLOWERS AND BIRDS, 10.3 X 2.8
& 10.1 X 2.9 CM.
民國 江西瓷業公司 粉彩花鳥紋盤一對

HK\$4,000-6,000

鄒國鈞 (1913-1996)：江西樂平人。15 歲起受其恩師汪野亭言傳身教，勤學苦練，擅長粉彩山水。曾與畢淵明等連袂舉辦個人畫展。先後擔任建國瓷廠、藝術瓷廠陶瓷美術設計師，景德鎮書畫院畫師，中國工藝美術協會會員。

223
A SET OF WUCAI TWELVE MONTHS
CUPS, KANGXI MARK, 6.5 X 5.5 CM.
康熙款 五彩十二花神杯

HK\$4,000-6,000



223



224



224



225



226



226

224

A DOUCAI BOWL, DAOGUANG MARK, FINELY DECORATED WITH FORMALISED PALMETTE PATTERNS, 10 X 5.5 CM.
道光款 青花五彩忍冬花紋碗

HK\$8,000-10,000

225

A PAIR OF CORAL RED GROUND FAMILLE-ROSE DECORATED CUPS, YONGZHENG MARK, EACH FINELY DECORATED WITH PEONY, 8.5 X 6.5 CM.
雍正款 珊瑚紅地黃地開光花卉杯一對

HK\$5,000-8,000

226

A CORAL RED DECORATED 'DRAGON' DISH, KANGXI MARK, D: 7.9 CM.
康熙款 珊瑚紅描金壽字龍紋盤

HK\$10,000-15,000



227

A SET OF FAMILLE-ROSE
COMPARTMENT DISHES WITH
WOODEN BOX AND COVER, 27 X
27 CM.

民國 粉彩九子盤連盒

HK\$4,000-6,000



228

A PAIR OF GREEN ENAMEL
DECORATED FLOWER POTS AND
STANDS, HONGXIAN MARK AND
PERIOD, H: 16 CM.

洪憲 綠地纏枝蓮紋花盆連托一對

HK\$24,000-30,000



229

A FAMILLE-ROSE TEA CUP AND
COVER, FINELY DECORATED WITH
FLOWERS AND BIRDS, H: 14 CM.

1970 年代 粉彩花鳥紋蓋杯
(50 至 70 年代高白釉手工胎)

HK\$2,000-4,000



230
A PAIR OF FAMILLE-ROSE VASES,
QIANLONG MARK, EACH FINELY
PAINTED WITH A MUSHROOM
LADY AND DEER, H: 15 CM.
乾隆款 麻姑獻壽紋瓶一對

HK\$4,000-8,000



231
A PAIR OF GILT DECORATED
MILLE-FLEUR DOUBLE GOURD
VASE, QIANLONG MARK, H: 9.5 CM.
乾隆款 金地粉彩大吉瓶一對

HK\$4,000-8,000



232
A FAMILLE-ROSE TEA CUP
AND COVER, ZHONG GUO JING
DE ZHEN ZHI MARK, FINELY
DECORATED WITH FLOWERS AND
BIRDS, H: 13.5 CM.
中國景德鎮製 粉彩花鳥紋蓋杯
(50 至 70 年代高白釉手工胎)

HK\$2,000-4,000



233

233
A MASSIVE YIXING FLOWER POT, FINELY
CARVED WITH LANDSCAPE, FIGURES
AND INSCRIPTIONS, H: 64 CM.
宜興刻山水人物瓶

HK\$6,000-8,000

234
A YIXING TEA POT AND COVER, FINELY
DECORATED WITH PLUM BLOSSOM, 20
X 9 CM.
梅扁宜興茶壺

HK\$3,000-4,000



234



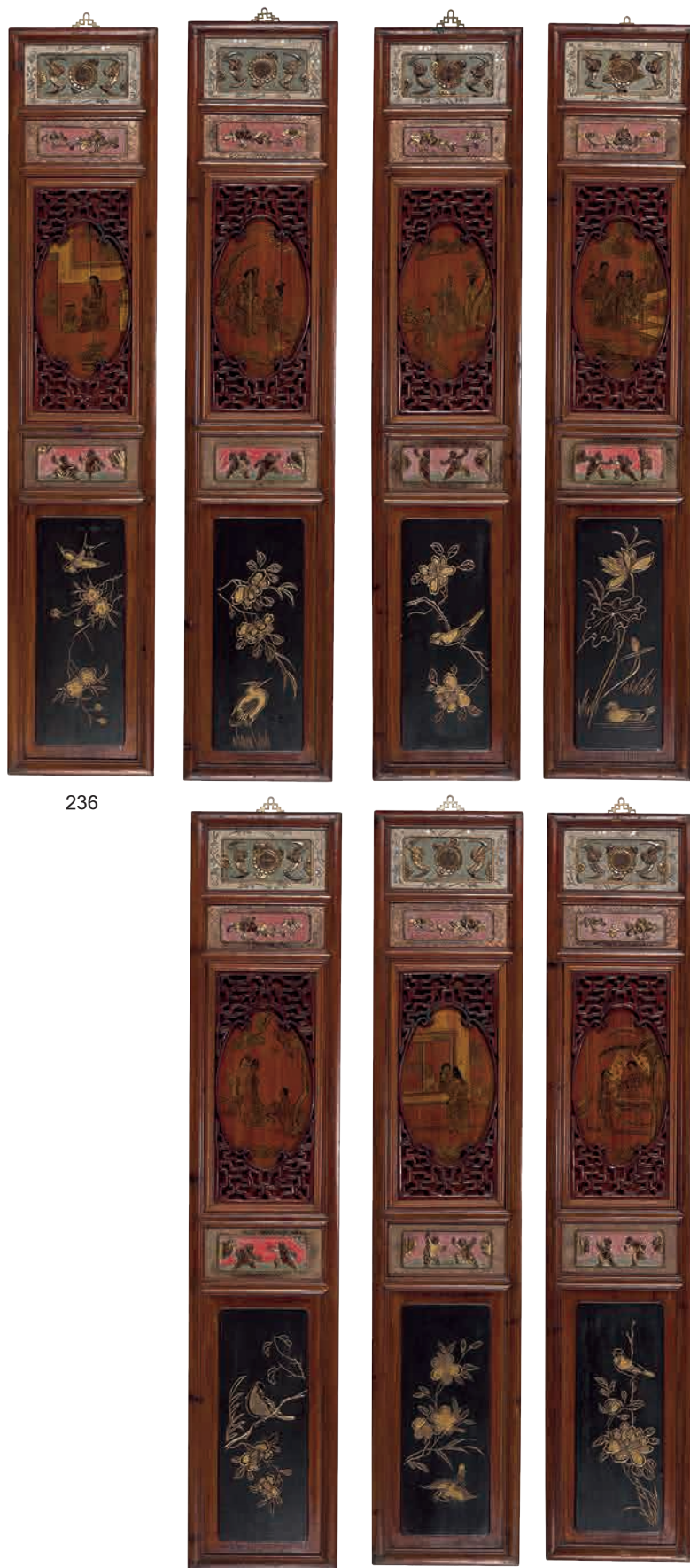
235

235
A HARDWOOD TABLE SCREEN INLAID
WITH A PIECE OF MARBLE, H: 54.5 CM.
酸枝大理石插屏

HK\$3,000-4,000

236
A SET OF SEVEN WOODEN CARVING
PANELS WITH FRAMES, 141 X 28 CM.
西廂記 金木掛屏一套七張

HK\$15,000-25,000



236

236

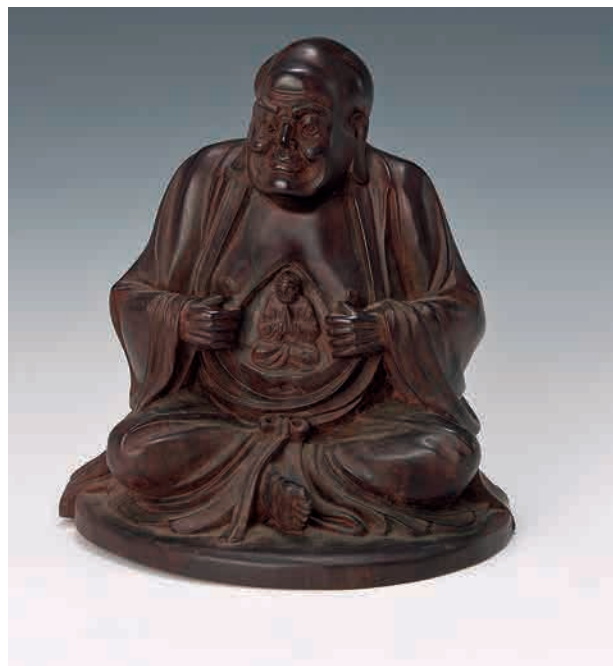
Paidegao

C79



237
A CARVED WOODEN TEA POT AND COVER, LATE
QING DYNASTY, 17 X 11 CM.
晚清 木刻松樹紋茶壺

HK\$5,000-7,000



238
A ZITAN FIGURE OF LUOHAN, H: 20 CM.
小葉紫檀羅漢

HK\$6,000-8,000



239
A HUANGHUALI WOODEN BRUSHPOT, H: 23 CM.
黃花梨筆筒

HK\$4,000-6,000



240
A JICHIMU WOODEN BRUSHPOT, H: 34 CM.
鸚鵡木大筆筒

HK\$20,000-30,000



241

A DUAN INK STONE FINELY DECORATED WITH DRAGON AND PHOENIX,
D: 21 CM.

龍鳳紋端硯

HK\$2,000-4,000



242

A GROUP OF FOUR WOODEN BRUSHPOTS, 8.5 X 10.5 TO 10.5 X 10.5 CM.

木刻筆筒四件

HK\$1,000-1,500



243
A BRONZE GARLIC MOUTH VASE, H: 21 CM.
銅胎蒜口瓶

HK\$1,500-3,000



244
A WHITE COPPER HAND WARMER, 19TH CENTURY,
13 X 15.5 CM.
十九世紀 白銅暖手爐

HK\$3,000-4,000

245
A SET OF FOUR WINDOW FRAMES, 19TH CENTURY,
EACH FINELY DECORATED WITH FOUR SEASONS OF
FLOWERS AND INSCRIPTIONS, 30.5 X 92 CM.
十九世紀 金木書法及梅蘭菊竹四屏

HK\$42,000-52,000



245



246

A SET OF FOUR PIECES OF SILVER PLATED TEA SERVICES, INCLUDING A TEA POT, COFFEE POT, MILK JAR AND TRAY, 15.5 X 49 CM.

潮陽顏吉興 鍍銀茶具一套連托共四件

HK\$5,000-7,000

顏吉興：清末民初粵東的制錫名家；清代粵省顏家的制錫頗負盛名，清皇帝曾賜賞衍聖公孔府一套 404 件之滿漢全席餐具，即是汕頭制錫名家顏和順所承作的。後來顏家人于汕頭多有自立門戶者，但亦秉持造錫家業。尤其咸豐十一年（1861 年）汕頭開埠後，潮陽制錫業就集中到汕頭市，由於地理位置和歷史條件，汕頭潮陽的錫器製品廣銷海外，為中國賺取不少外匯。今日潮陽的制錫業雖已沒落，但是這些流傳近百年的古董老件，卻仍然色澤優美、紋案清晰，默默地為往昔繁華一時的粵東造錫留下輝煌的印記呢！



247

A CLOISSONNE ENAMEL VASE, FINELY DECORATED WITH PRECIOUS OBJECTS, H: 45.5 CM.

銅胎琺瑯彩博古紋雙耳瓶

HK\$2,000-3,000



248

AN EMBELLISHED PRECIOUS STONE TABLE SCREEN, 25.5 X 18.5 CM.

鶴鹿同春 鑲寶石鏡屏

HK\$3,000-4,000

中国陶瓷及藝術珍玩

2013年11月28日(星期四)

掃過丁臺不出反心
雲迷却舊行踪



PAIDEGAO